

## Anti-Cripto1 Rabbit Monoclonal Antibody Catalog # ABO15610

### Specification

---

#### Anti-Cripto1 Rabbit Monoclonal Antibody - Product Information

Application	WB, IF, ICC, IP, FC
Primary Accession	<a href="#">P13385</a>
Host	Rabbit
Isotype	IgG
Reactivity	Human
Clonality	Monoclonal
Format	Liquid

#### Description

Anti-Cripto1 Rabbit Monoclonal Antibody . Tested in WB, ICC/IF, IP, Flow Cytometry applications. This antibody reacts with Human.

#### Anti-Cripto1 Rabbit Monoclonal Antibody - Additional Information

Gene ID 6997

#### Other Names

Protein Cripto, Cripto, EGF-CFC family member {ECO:0000312|HGNC:HGNC:11701}, Cripto-1 growth factor, CRGF, Epidermal growth factor-like cripto protein CR1, Teratocarcinoma-derived growth factor 1, CRIPTO {ECO:0000303|PubMed:2792079, ECO:0000312|HGNC:HGNC:11701}

#### Calculated MW

21 kDa KDa

#### Application Details

WB 1:500-1:2000<br>ICC/IF 1:50-1:200<br>IP 1:50<br>FC 1:50

#### Contents

Rabbit IgG in phosphate buffered saline, pH 7.4, 150mM NaCl, 0.02% sodium azide and 50% glycerol, 0.4-0.5mg/ml BSA.

#### Immunogen

A synthesized peptide derived from human Cripto1

#### Purification

Affinity-chromatography

#### Storage

Store at -20°C for one year. For short term storage and frequent use, store at 4°C for up to one month. Avoid repeated freeze-thaw cycles.

#### Anti-Cripto1 Rabbit Monoclonal Antibody - Protein Information

**Name** CRIPTO {ECO:0000303|PubMed:2792079, ECO:0000312|HGNC:HGNC:11701}

### Function

GPI-anchored cell membrane protein involved in Nodal signaling. Cell-associated CRIPTO acts as a Nodal coreceptor in cis. Shedding of CRIPTO by TMEM8A modulates Nodal signaling by allowing soluble CRIPTO to act as a Nodal coreceptor on other cells (PubMed:<a href="http://www.uniprot.org/citations/27881714" target="\_blank">27881714</a>). Could play a role in the determination of the epiblastic cells that subsequently give rise to the mesoderm (PubMed:<a href="http://www.uniprot.org/citations/11909953" target="\_blank">11909953</a>).

### Cellular Location

Cell membrane; Lipid-anchor, GPI-anchor. Secreted. Note=Released from the cell membrane by GPI cleavage.

### Tissue Location

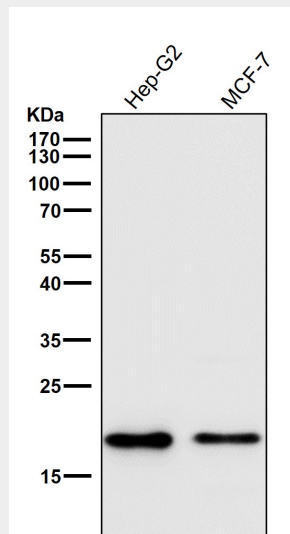
Preferentially expressed in gastric and colorectal carcinomas than in their normal counterparts. Expressed in breast and lung.

## Anti-Cripto1 Rabbit Monoclonal Antibody - Protocols

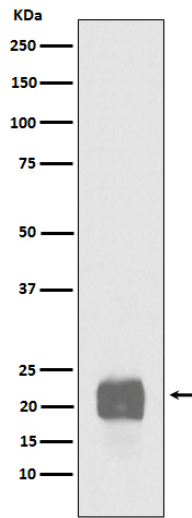
Provided below are standard protocols that you may find useful for product applications.

- [Western Blot](#)
- [Blocking Peptides](#)
- [Dot Blot](#)
- [Immunohistochemistry](#)
- [Immunofluorescence](#)
- [Immunoprecipitation](#)
- [Flow Cytometry](#)
- [Cell Culture](#)

## Anti-Cripto1 Rabbit Monoclonal Antibody - Images



All lanes use the Antibody at 1:1K dilution for 1 hour at room temperature.



Western blot analysis of Cripto1 expression in NCCIT cell lysate.