

**Anti-HSF2 Rabbit Monoclonal Antibody**  
Catalog # ABO15607

**Specification**

---

**Anti-HSF2 Rabbit Monoclonal Antibody - Product Information**

Application	WB, IF, ICC, FC
Primary Accession	<a href="#">Q03933</a>
Host	Rabbit
Isotype	IgG
Reactivity	Human
Clonality	Monoclonal
Format	Liquid

**Description**

Anti-HSF2 Rabbit Monoclonal Antibody . Tested in WB, ICC/IF, Flow Cytometry applications. This antibody reacts with Human.

**Anti-HSF2 Rabbit Monoclonal Antibody - Additional Information**

**Gene ID** 3298

**Other Names**

Heat shock factor protein 2, HSF 2, Heat shock transcription factor 2, HSTF 2, HSF2, HSTF2

**Calculated MW**

60 kDa KDa

**Application Details**

WB 1:500-1:2000<br>ICC/IF 1:50-1:200<br>FC 1:50

**Contents**

Rabbit IgG in phosphate buffered saline, pH 7.4, 150mM NaCl, 0.02% sodium azide and 50% glycerol, 0.4-0.5mg/ml BSA.

**Immunogen**

A synthesized peptide derived from human HSF2

**Purification**

Affinity-chromatography

**Storage**

**Store at -20°C for one year. For short term storage and frequent use, store at 4°C for up to one month. Avoid repeated freeze-thaw cycles.**

**Anti-HSF2 Rabbit Monoclonal Antibody - Protein Information**

**Name** HSF2

## Synonyms HSTF2

### Function

DNA-binding protein that specifically binds heat shock promoter elements (HSE) and activates transcription. In higher eukaryotes, HSF is unable to bind to the HSE unless the cells are heat shocked.

### Cellular Location

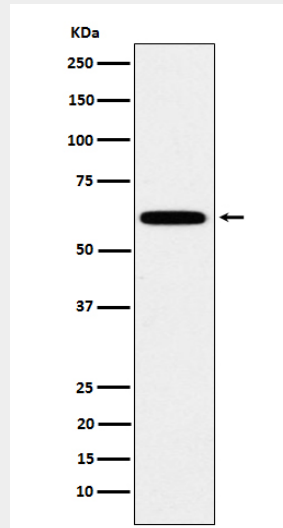
Cytoplasm. Nucleus. Note=Cytoplasmic during normal growth and moves to the nucleus upon activation

## Anti-HSF2 Rabbit Monoclonal Antibody - Protocols

Provided below are standard protocols that you may find useful for product applications.

- [Western Blot](#)
- [Blocking Peptides](#)
- [Dot Blot](#)
- [Immunohistochemistry](#)
- [Immunofluorescence](#)
- [Immunoprecipitation](#)
- [Flow Cytometry](#)
- [Cell Culture](#)

## Anti-HSF2 Rabbit Monoclonal Antibody - Images



Western blot analysis of HSF2 expression in HeLa cell lysate.