

Anti-BOB1 Rabbit Monoclonal Antibody
Catalog # ABO15597**Specification****Anti-BOB1 Rabbit Monoclonal Antibody - Product Information**

| | |
|-------------------|------------------------|
| Application | WB, IHC, IF, ICC, FC |
| Primary Accession | Q16633 |
| Host | Rabbit |
| Isotype | IgG |
| Reactivity | Human |
| Clonality | Monoclonal |
| Format | Liquid |

Description

Anti-BOB1 Rabbit Monoclonal Antibody . Tested in WB, IHC, ICC/IF, Flow Cytometry applications.
This antibody reacts with Human.

Anti-BOB1 Rabbit Monoclonal Antibody - Additional Information

Gene ID 5450

Other Names

POU domain class 2-associating factor 1, B-cell-specific coactivator OBF-1, BOB-1, OCA-B, OCT-binding factor 1, POU2AF1 ([HGNC:9211](http://www.genenames.org/cgi-bin/gene_symbol_report?hgnc_id=9211))

Calculated MW

35 kDa KDa

Application Details

WB 1:500-1:2000
IHC 1:50-1:200
ICC/IF 1:50-1:200
FC 1:50

Contents

Rabbit IgG in phosphate buffered saline, pH 7.4, 150mM NaCl, 0.02% sodium azide and 50% glycerol, 0.4-0.5mg/ml BSA.

Immunogen

A synthesized peptide derived from human BOB1

Purification

Affinity-chromatography

Storage

Store at -20°C for one year. For short term storage and frequent use, store at 4°C for up to one month. Avoid repeated freeze-thaw cycles.

Anti-BOB1 Rabbit Monoclonal Antibody - Protein Information

Name POU2AF1 ([HGNC:9211](#))

Function

Transcriptional coactivator that specifically associates with either POU2F1/OCT1 or POU2F2/OCT2 (PubMed:[7859290](http://www.uniprot.org/citations/7859290)). It boosts the POU2F1/OCT1 mediated promoter activity and to a lesser extent, that of POU2F2/OCT2 (PubMed:[7779176](http://www.uniprot.org/citations/7779176)). It recognizes the POU domains of POU2F1/OCT1 and POU2F2/OCT2 (PubMed:[7779176](http://www.uniprot.org/citations/7779176)). It is essential for the response of B-cells to antigens and required for the formation of germinal centers (PubMed:[7623806](http://www.uniprot.org/citations/7623806), PubMed:[7859290](http://www.uniprot.org/citations/7859290)). Regulates IL6 expression in B cells as POU2F2/OCT2 coactivator (By similarity).

Cellular Location

Nucleus.

Tissue Location

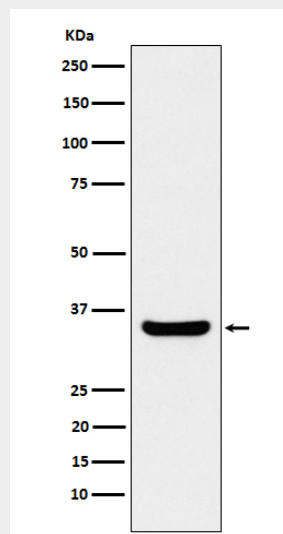
B-cell specific (PubMed:7779176, PubMed:7859290). Detected in mainly in spleen, but also in thymus, peripheral blood leukocyte and small intestine (PubMed:7779176, PubMed:7859290)

Anti-BOB1 Rabbit Monoclonal Antibody - Protocols

Provided below are standard protocols that you may find useful for product applications.

- [Western Blot](#)
- [Blocking Peptides](#)
- [Dot Blot](#)
- [Immunohistochemistry](#)
- [Immunofluorescence](#)
- [Immunoprecipitation](#)
- [Flow Cytometry](#)
- [Cell Culture](#)

Anti-BOB1 Rabbit Monoclonal Antibody - Images



Western blot analysis of BOB1 expression in Ramos cell lysate.