

Anti-Otx2 Rabbit Monoclonal Antibody Catalog # ABO15596

Specification

Anti-Otx2 Rabbit Monoclonal Antibody - Product Information

Application	WB
Primary Accession	P32243
Host	Rabbit
Isotype	IgG
Reactivity	Human
Clonality	Monoclonal
Format	Liquid

Description

Anti-Otx2 Rabbit Monoclonal Antibody . Tested in WB application. This antibody reacts with Human.

Anti-Otx2 Rabbit Monoclonal Antibody - Additional Information

Gene ID 5015

Other Names

Homeobox protein OTX2, Orthodenticle homolog 2, OTX2

Calculated MW

32 kDa KDa

Application Details

WB 1:500-1:2000

Contents

Rabbit IgG in phosphate buffered saline, pH 7.4, 150mM NaCl, 0.02% sodium azide and 50% glycerol, 0.4-0.5mg/ml BSA.

Immunogen

A synthesized peptide derived from human Otx2

Purification

Affinity-chromatography

Storage

Store at -20°C for one year. For short term storage and frequent use, store at 4°C for up to one month. Avoid repeated freeze-thaw cycles.

Anti-Otx2 Rabbit Monoclonal Antibody - Protein Information

Name OTX2

Function

Transcription factor probably involved in the development of the brain and the sense organs. Can bind to the bicoid/BCD target sequence (BTS): 5'-TCTAATCCC-3'.

Cellular Location

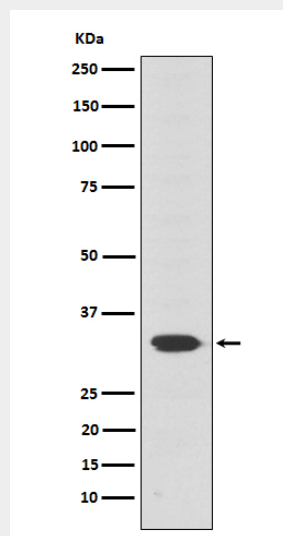
Nucleus.

Anti-Otx2 Rabbit Monoclonal Antibody - Protocols

Provided below are standard protocols that you may find useful for product applications.

- [Western Blot](#)
- [Blocking Peptides](#)
- [Dot Blot](#)
- [Immunohistochemistry](#)
- [Immunofluorescence](#)
- [Immunoprecipitation](#)
- [Flow Cytometry](#)
- [Cell Culture](#)

Anti-Otx2 Rabbit Monoclonal Antibody - Images



Western blot analysis of Otx2 expression in Y79 cell lysate.