

Anti-Apolipoprotein F Rabbit Monoclonal Antibody
Catalog # ABO15594**Specification**

Anti-Apolipoprotein F Rabbit Monoclonal Antibody - Product Information

Application	WB, IF, ICC
Primary Accession	Q13790
Host	Rabbit
Isotype	IgG
Reactivity	Human
Clonality	Monoclonal
Format	Liquid

Description

Anti-Apolipoprotein F Rabbit Monoclonal Antibody . Tested in WB, ICC/IF applications. This antibody reacts with Human.

Anti-Apolipoprotein F Rabbit Monoclonal Antibody - Additional Information

Gene ID 319

Other Names

Apolipoprotein F, Apo-F, Lipid transfer inhibitor protein, LTIP, APOF

Calculated MW

33 kDa KDa

Application Details

WB 1:500-1:2000
ICC/IF 1:50-1:200

Contents

Rabbit IgG in phosphate buffered saline, pH 7.4, 150mM NaCl, 0.02% sodium azide and 50% glycerol, 0.4-0.5mg/ml BSA.

Immunogen

A synthesized peptide derived from human Apolipoprotein F

Purification

Affinity-chromatography

Storage

Store at -20°C for one year. For short term storage and frequent use, store at 4°C for up to one month. Avoid repeated freeze-thaw cycles.

Anti-Apolipoprotein F Rabbit Monoclonal Antibody - Protein Information

Name APOF

Function

Minor apolipoprotein that associates with LDL. Inhibits cholesteryl ester transfer protein (CETP) activity and appears to be an important regulator of cholesterol transport. Also associates to a lesser degree with VLDL, Apo-AI and Apo-AII.

Cellular Location

Secreted

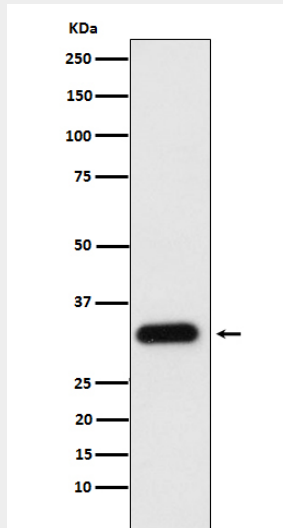
Tissue Location

Expressed by the liver and secreted in plasma.

Anti-Apolipoprotein F Rabbit Monoclonal Antibody - Protocols

Provided below are standard protocols that you may find useful for product applications.

- [Western Blot](#)
- [Blocking Peptides](#)
- [Dot Blot](#)
- [Immunohistochemistry](#)
- [Immunofluorescence](#)
- [Immunoprecipitation](#)
- [Flow Cytometry](#)
- [Cell Culture](#)

Anti-Apolipoprotein F Rabbit Monoclonal Antibody - Images

Western blot analysis of Apolipoprotein F expression in human plasma cell lysate.