

Anti-BAG2 Rabbit Monoclonal Antibody Catalog # ABO15591

Specification

Anti-BAG2 Rabbit Monoclonal Antibody - Product Information

| | |
|-------------------|------------------------|
| Application | WB, IHC, IF, ICC, FC |
| Primary Accession | O95816 |
| Host | Rabbit |
| Isotype | IgG |
| Reactivity | Human |
| Clonality | Monoclonal |
| Format | Liquid |

Description

Anti-BAG2 Rabbit Monoclonal Antibody . Tested in WB, IHC, ICC/IF, Flow Cytometry applications.
This antibody reacts with Human.

Anti-BAG2 Rabbit Monoclonal Antibody - Additional Information

Gene ID 9532

Other Names

BAG family molecular chaperone regulator 2, BAG-2, Bcl-2-associated athanogene 2, BAG2

Calculated MW

24 kDa KDa

Application Details

WB 1:500-1:2000
IHC 1:50-1:200
ICC/IF 1:50-1:200
FC 1:50

Contents

Rabbit IgG in phosphate buffered saline, pH 7.4, 150mM NaCl, 0.02% sodium azide and 50% glycerol, 0.4-0.5mg/ml BSA.

Immunogen

A synthesized peptide derived from human BAG2

Purification

Affinity-chromatography

Storage

Store at -20°C for one year. For short term storage and frequent use, store at 4°C for up to one month. Avoid repeated freeze-thaw cycles.

Anti-BAG2 Rabbit Monoclonal Antibody - Protein Information

Name BAG2

Function

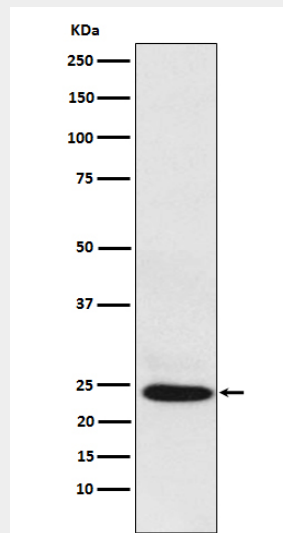
Co-chaperone for HSP70 and HSC70 chaperone proteins. Acts as a nucleotide-exchange factor (NEF) promoting the release of ADP from the HSP70 and HSC70 proteins thereby triggering client/substrate protein release (PubMed:24318877, PubMed:9873016).

Anti-BAG2 Rabbit Monoclonal Antibody - Protocols

Provided below are standard protocols that you may find useful for product applications.

- [Western Blot](#)
- [Blocking Peptides](#)
- [Dot Blot](#)
- [Immunohistochemistry](#)
- [Immunofluorescence](#)
- [Immunoprecipitation](#)
- [Flow Cytometry](#)
- [Cell Culture](#)

Anti-BAG2 Rabbit Monoclonal Antibody - Images



Western blot analysis of BAG2 expression in HepG2 cell lysate.