

Anti-GTPBP4 Rabbit Monoclonal Antibody
Catalog # ABO15588**Specification****Anti-GTPBP4 Rabbit Monoclonal Antibody - Product Information**

Application	WB, IHC, IP, FC
Primary Accession	Q9BZE4
Host	Rabbit
Isotype	IgG
Reactivity	Human
Clonality	Monoclonal
Format	Liquid

Description

Anti-GTPBP4 Rabbit Monoclonal Antibody . Tested in WB, IHC, IP, Flow Cytometry applications. This antibody reacts with Human.

Anti-GTPBP4 Rabbit Monoclonal Antibody - Additional Information

Gene ID 23560

Other Names

GTP-binding protein 4, Chronic renal failure gene protein, GTP-binding protein NGB, Nucleolar GTP-binding protein 1, GTPBP4 ([HGNC:21535](http://www.genenames.org/cgi-bin/gene_symbol_report?hgnc_id=21535)), CRFG, NOG1

Calculated MW

80 kDa KDa

Application Details

WB 1:500-1:2000
IHC 1:50-1:200
IP 1:50
FC 1:50

Contents

Rabbit IgG in phosphate buffered saline, pH 7.4, 150mM NaCl, 0.02% sodium azide and 50% glycerol, 0.4-0.5mg/ml BSA.

Immunogen

A synthesized peptide derived from human GTPBP4

Purification

Affinity-chromatography

Storage

Store at -20°C for one year. For short term storage and frequent use, store at 4°C for up to one month. Avoid repeated freeze-thaw cycles.

Anti-GTPBP4 Rabbit Monoclonal Antibody - Protein Information

Name GTPBP4 ([HGNC:21535](#))

Synonyms CRFG, NOG1

Function

Involved in the biogenesis of the 60S ribosomal subunit (PubMed:32669547). Acts as a TP53 repressor, preventing TP53 stabilization and cell cycle arrest (PubMed:20308539).

Cellular Location

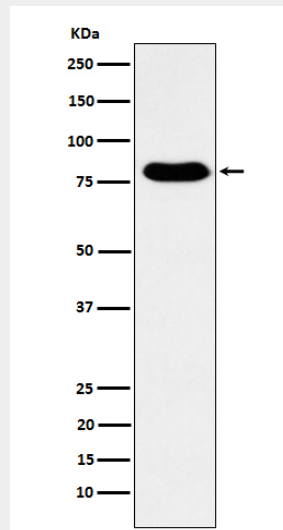
Nucleus, nucleolus {ECO:0000269|PubMed:11316846, ECO:0000269|PubMed:12429849, ECO:0000269|Ref.8}

Anti-GTPBP4 Rabbit Monoclonal Antibody - Protocols

Provided below are standard protocols that you may find useful for product applications.

- [Western Blot](#)
- [Blocking Peptides](#)
- [Dot Blot](#)
- [Immunohistochemistry](#)
- [Immunofluorescence](#)
- [Immunoprecipitation](#)
- [Flow Cytometry](#)
- [Cell Culture](#)

Anti-GTPBP4 Rabbit Monoclonal Antibody - Images



Western blot analysis of GTPBP4 expression in Human fetal kidney lysate.