

Anti-GNB2 Rabbit Monoclonal Antibody
Catalog # ABO15582

Specification

Anti-GNB2 Rabbit Monoclonal Antibody - Product Information

Application	WB, IHC, IF, ICC, IP, FC
Primary Accession	P62879
Host	Rabbit
Isotype	IgG
Reactivity	Rat, Human, Mouse
Clonality	Monoclonal
Format	Liquid

Description

Anti-GNB2 Rabbit Monoclonal Antibody . Tested in WB, IHC, ICC/IF, IP, Flow Cytometry applications. This antibody reacts with Human, Mouse, Rat.

Anti-GNB2 Rabbit Monoclonal Antibody - Additional Information

Gene ID 2783

Other Names

Guanine nucleotide-binding protein G(I)/G(S)/G(T) subunit beta-2, G protein subunit beta-2, Transducin beta chain 2, GNB2

Calculated MW

35 kDa KDa

Application Details

WB 1:500-1:2000
IHC 1:50-1:200
ICC/IF 1:50-1:200
IP 1:50
FC 1:50

Contents

Rabbit IgG in phosphate buffered saline, pH 7.4, 150mM NaCl, 0.02% sodium azide and 50% glycerol, 0.4-0.5mg/ml BSA.

Immunogen

A synthesized peptide derived from human GNB2

Purification

Affinity-chromatography

Storage

Store at -20°C for one year. For short term storage and frequent use, store at 4°C for up to one month. Avoid repeated freeze-thaw cycles.

Anti-GNB2 Rabbit Monoclonal Antibody - Protein Information

Name GNB2

Function

Guanine nucleotide-binding proteins (G proteins) are involved as a modulator or transducer in various transmembrane signaling systems. The beta and gamma chains are required for the GTPase activity, for replacement of GDP by GTP, and for G protein-effector interaction.

Cellular Location

Cytoplasm, perinuclear region. Cell membrane

Tissue Location

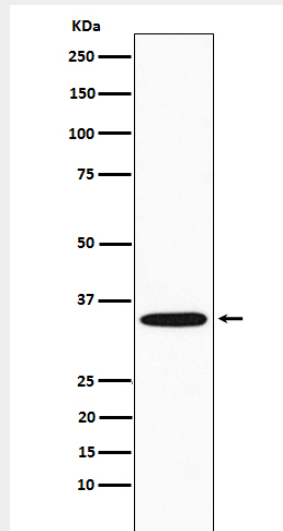
Expressed in all cardiac subcompartments and in the brain, with highest levels in the atrioventricular node and brain

Anti-GNB2 Rabbit Monoclonal Antibody - Protocols

Provided below are standard protocols that you may find useful for product applications.

- [Western Blot](#)
- [Blocking Peptides](#)
- [Dot Blot](#)
- [Immunohistochemistry](#)
- [Immunofluorescence](#)
- [Immunoprecipitation](#)
- [Flow Cytometry](#)
- [Cell Culture](#)

Anti-GNB2 Rabbit Monoclonal Antibody - Images



Western blot analysis of GNB2 expression in Jurkat cell lysate.