

Anti-RAIDD Rabbit Monoclonal Antibody
Catalog # ABO15580**Specification****Anti-RAIDD Rabbit Monoclonal Antibody - Product Information**

Application	WB, IF, ICC, IP, FC
Primary Accession	P78560
Host	Rabbit
Isotype	IgG
Reactivity	Rat, Human
Clonality	Monoclonal
Format	Liquid

Description

Anti-RAIDD Rabbit Monoclonal Antibody . Tested in WB, ICC/IF, IP, Flow Cytometry applications. This antibody reacts with Human, Rat.

Anti-RAIDD Rabbit Monoclonal Antibody - Additional Information

Gene ID 8738

Other Names

Death domain-containing protein CRADD, Caspase and RIP adapter with death domain, RIP-associated protein with a death domain, CRADD, RAIDD

Calculated MW

23 kDa KDa

Application Details

WB 1:500-1:2000
ICC/IF 1:50-1:200
IP 1:50
FC 1:50

Contents

Rabbit IgG in phosphate buffered saline, pH 7.4, 150mM NaCl, 0.02% sodium azide and 50% glycerol, 0.4-0.5mg/ml BSA.

Immunogen

A synthesized peptide derived from human RAIDD

Purification

Affinity-chromatography

Storage

Store at -20°C for one year. For short term storage and frequent use, store at 4°C for up to one month. Avoid repeated freeze-thaw cycles.

Anti-RAIDD Rabbit Monoclonal Antibody - Protein Information

Name CRADD

Synonyms RAIDD

Function

Adapter protein that associates with PIDD1 and the caspase CASP2 to form the PIDDosome, a complex that activates CASP2 and triggers apoptosis (PubMed:15073321, PubMed:16652156, PubMed:17159900, PubMed:17289572, PubMed:9044836). Also recruits CASP2 to the TNFR-1 signaling complex through its interaction with RIPK1 and TRADD and may play a role in the tumor necrosis factor-mediated signaling pathway (PubMed:8985253).

Cellular Location

Cytoplasm {ECO:0000250|UniProtKB:O88843}. Nucleus {ECO:0000250|UniProtKB:O88843}

Tissue Location

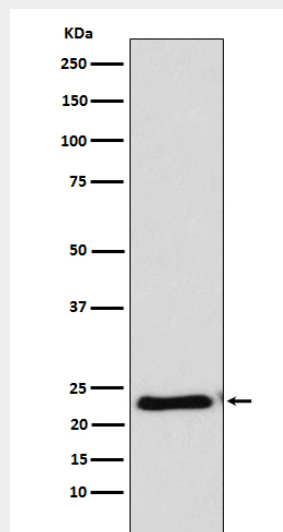
Constitutively expressed in most tissues, with particularly high expression in adult heart, testis, liver, skeletal muscle, fetal liver and kidney.

Anti-RAIDD Rabbit Monoclonal Antibody - Protocols

Provided below are standard protocols that you may find useful for product applications.

- [Western Blot](#)
- [Blocking Peptides](#)
- [Dot Blot](#)
- [Immunohistochemistry](#)
- [Immunofluorescence](#)
- [Immunoprecipitation](#)
- [Flow Cytometry](#)
- [Cell Culture](#)

Anti-RAIDD Rabbit Monoclonal Antibody - Images



Western blot analysis of RAIDD expression in HeLa cell lysate.