

## Anti-MMP1 Rabbit Monoclonal Antibody Catalog # ABO15576

### Specification

---

#### Anti-MMP1 Rabbit Monoclonal Antibody - Product Information

Application	WB, IP
Primary Accession	<a href="#">P03956</a>
Host	Rabbit
Isotype	IgG
Reactivity	Human
Clonality	Monoclonal
Format	Liquid

#### Description

Anti-MMP1 Rabbit Monoclonal Antibody . Tested in WB, IP applications. This antibody reacts with Human.

#### Anti-MMP1 Rabbit Monoclonal Antibody - Additional Information

Gene ID 4312

#### Other Names

Interstitial collagenase, 3.4.24.7, Fibroblast collagenase, Matrix metalloproteinase-1, MMP-1, 22 kDa interstitial collagenase, 27 kDa interstitial collagenase, MMP1, CLG

#### Calculated MW

54 kDa KDa

#### Application Details

WB 1:500-1:2000<br>IP 1:50

#### Contents

Rabbit IgG in phosphate buffered saline, pH 7.4, 150mM NaCl, 0.02% sodium azide and 50% glycerol, 0.4-0.5mg/ml BSA.

#### Immunogen

A synthesized peptide derived from human MMP1

#### Purification

Affinity-chromatography

Storage

**Store at -20°C for one year. For short term storage and frequent use, store at 4°C for up to one month. Avoid repeated freeze-thaw cycles.**

#### Anti-MMP1 Rabbit Monoclonal Antibody - Protein Information

Name MMP1

## Synonyms CLG

### Function

Cleaves collagens of types I, II, and III at one site in the helical domain. Also cleaves collagens of types VII and X (PubMed:<a href="http://www.uniprot.org/citations/1645757" target="\_blank">1645757</a>, PubMed:<a href="http://www.uniprot.org/citations/2153297" target="\_blank">2153297</a>, PubMed:<a href="http://www.uniprot.org/citations/2557822" target="\_blank">2557822</a>). In case of HIV infection, interacts and cleaves the secreted viral Tat protein, leading to a decrease in neuronal Tat's mediated neurotoxicity (PubMed:<a href="http://www.uniprot.org/citations/16807369" target="\_blank">16807369</a>).

### Cellular Location

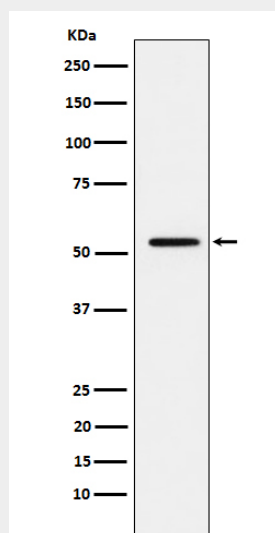
Secreted, extracellular space, extracellular matrix

## Anti-MMP1 Rabbit Monoclonal Antibody - Protocols

Provided below are standard protocols that you may find useful for product applications.

- [Western Blot](#)
- [Blocking Peptides](#)
- [Dot Blot](#)
- [Immunohistochemistry](#)
- [Immunofluorescence](#)
- [Immunoprecipitation](#)
- [Flow Cytometry](#)
- [Cell Culture](#)

## Anti-MMP1 Rabbit Monoclonal Antibody - Images



Western blot analysis of MMP1 expression in A431 cell lysate.