

**Anti-RAB27A Rabbit Monoclonal Antibody**  
Catalog # ABO15553

**Specification**

---

**Anti-RAB27A Rabbit Monoclonal Antibody - Product Information**

Application	WB, IF, ICC, IP, FC
Primary Accession	<a href="#">P51159</a>
Host	Rabbit
Isotype	IgG
Reactivity	Human
Clonality	Monoclonal
Format	Liquid

**Description**

Anti-RAB27A Rabbit Monoclonal Antibody . Tested in WB, ICC/IF, IP, Flow Cytometry applications. This antibody reacts with Human.

**Anti-RAB27A Rabbit Monoclonal Antibody - Additional Information**

**Gene ID** 5873

**Other Names**

Ras-related protein Rab-27A, Rab-27, 3.6.5.2, GTP-binding protein Ram, RAB27A, RAB27

**Calculated MW**

27 kDa KDa

**Application Details**

WB 1:500-1:2000<br>ICC/IF 1:50-1:200<br>IP 1:50<br>FC 1:200

**Contents**

Rabbit IgG in phosphate buffered saline, pH 7.4, 150mM NaCl, 0.02% sodium azide and 50% glycerol, 0.4-0.5mg/ml BSA.

**Immunogen**

A synthesized peptide derived from human RAB27A

**Purification**

Affinity-chromatography

**Storage**

**Store at -20°C for one year. For short term storage and frequent use, store at 4°C for up to one month. Avoid repeated freeze-thaw cycles.**

**Anti-RAB27A Rabbit Monoclonal Antibody - Protein Information**

**Name** RAB27A

## Synonyms RAB27

### Function

Small GTPase which cycles between active GTP-bound and inactive GDP-bound states. In its active state, binds to a variety of effector proteins to regulate homeostasis of late endocytic pathway, including endosomal positioning, maturation and secretion (PubMed:<a href="http://www.uniprot.org/citations/30771381" target="\_blank">30771381</a>). Plays a role in cytotoxic granule exocytosis in lymphocytes. Required for both granule maturation and granule docking and priming at the immunologic synapse.

### Cellular Location

Membrane; Lipid-anchor. Melanosome. Late endosome. Lysosome. Note=Identified by mass spectrometry in melanosome fractions from stage I to stage IV (PubMed:12643545, PubMed:17081065). Localizes to endosomal exocytic vesicles (PubMed:17237785).

### Tissue Location

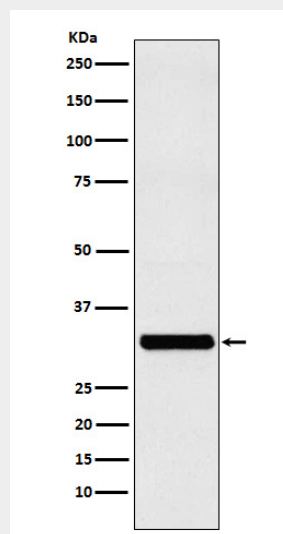
Found in all the examined tissues except in brain. Low expression was found in thymus, kidney, muscle and placenta Detected in melanocytes, and in most tumor cell lines examined Expressed in cytotoxic T-lymphocytes (CTL) and mast cells

## Anti-RAB27A Rabbit Monoclonal Antibody - Protocols

Provided below are standard protocols that you may find useful for product applications.

- [Western Blot](#)
- [Blocking Peptides](#)
- [Dot Blot](#)
- [Immunohistochemistry](#)
- [Immunofluorescence](#)
- [Immunoprecipitation](#)
- [Flow Cytometry](#)
- [Cell Culture](#)

## Anti-RAB27A Rabbit Monoclonal Antibody - Images



Western blot analysis of RAB27A expression in MCF-7 cell lysate.