

**Anti-LDHA Rabbit Monoclonal Antibody**  
Catalog # ABO15542**Specification****Anti-LDHA Rabbit Monoclonal Antibody - Product Information**

Application	WB, IHC, IF, ICC, FC
Primary Accession	<a href="#">P00338</a>
Host	Rabbit
Isotype	IgG
Reactivity	Rat, Human, Mouse
Clonality	Monoclonal
Format	Liquid

**Description**

Anti-LDHA Rabbit Monoclonal Antibody . Tested in WB, IHC, ICC/IF, Flow Cytometry applications. This antibody reacts with Human, Mouse, Rat.

**Anti-LDHA Rabbit Monoclonal Antibody - Additional Information**

**Gene ID** 3939

**Other Names**

L-lactate dehydrogenase A chain, LDH-A, 1.1.1.27, Cell proliferation-inducing gene 19 protein, LDH muscle subunit, LDH-M, Renal carcinoma antigen NY-REN-59, LDHA ([HGNC:6535](http://www.genenames.org/cgi-bin/gene_symbol_report?hgnc_id=6535))

**Calculated MW**

37 kDa KDa

**Application Details**

WB 1:500-1:2000<br>IHC 1:50-1:200<br>ICC/IF 1:50-1:200<br>FC 1:50

**Contents**

Rabbit IgG in phosphate buffered saline, pH 7.4, 150mM NaCl, 0.02% sodium azide and 50% glycerol, 0.4-0.5mg/ml BSA.

**Immunogen**

A synthesized peptide derived from human LDHA

**Purification**

Affinity-chromatography

**Storage**

**Store at -20°C for one year. For short term storage and frequent use, store at 4°C for up to one month. Avoid repeated freeze-thaw cycles.**

**Anti-LDHA Rabbit Monoclonal Antibody - Protein Information**

**Name** LDHA ([HGNC:6535](#))

**Function**

Interconverts simultaneously and stereospecifically pyruvate and lactate with concomitant interconversion of NADH and NAD(+).

**Cellular Location**

Cytoplasm.

**Tissue Location**

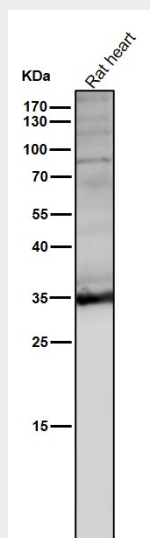
Predominantly expressed in anaerobic tissues such as skeletal muscle and liver.

**Anti-LDHA Rabbit Monoclonal Antibody - Protocols**

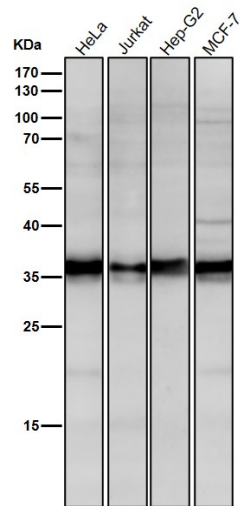
Provided below are standard protocols that you may find useful for product applications.

- [Western Blot](#)
- [Blocking Peptides](#)
- [Dot Blot](#)
- [Immunohistochemistry](#)
- [Immunofluorescence](#)
- [Immunoprecipitation](#)
- [Flow Cytometry](#)
- [Cell Culture](#)

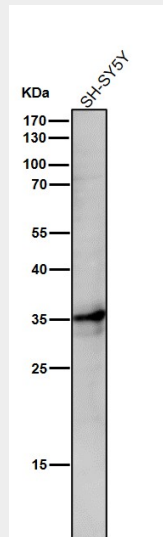
**Anti-LDHA Rabbit Monoclonal Antibody - Images**



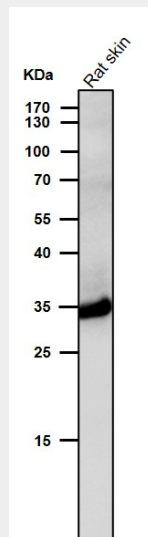
All lanes use the Antibody at 1:3K dilution for 1 hour at room temperature.



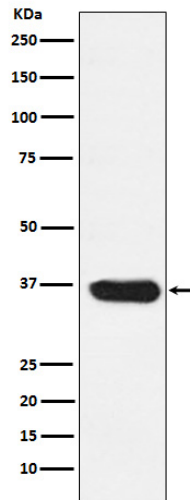
All lanes use the Antibody at 1:3K dilution for 1 hour at room temperature.



All lanes use the Antibody at 1:3K dilution for 1 hour at room temperature.



All lanes use the Antibody at 1:3K dilution for 1 hour at room temperature.



Western blot analysis of LDHA expression in MCF7 cell lysate.