

Anti-Syntaxin 4 Rabbit Monoclonal Antibody Catalog # ABO15540

Specification

Anti-Syntaxin 4 Rabbit Monoclonal Antibody - Product Information

Application	WB
Primary Accession	Q12846
Host	Rabbit
Isotype	IgG
Reactivity	Rat, Human, Mouse
Clonality	Monoclonal
Format	Liquid

Description

Anti-Syntaxin 4 Rabbit Monoclonal Antibody . Tested in WB application. This antibody reacts with Human, Mouse, Rat.

Anti-Syntaxin 4 Rabbit Monoclonal Antibody - Additional Information

Gene ID 6810

Other Names

Syntaxin-4, Renal carcinoma antigen NY-REN-31, STX4, STX4A

Calculated MW

34 kDa KDa

Application Details

WB 1:500-1:2000

Contents

Rabbit IgG in phosphate buffered saline, pH 7.4, 150mM NaCl, 0.02% sodium azide and 50% glycerol, 0.4-0.5mg/ml BSA.

Immunogen

A synthesized peptide derived from human Syntaxin 4

Purification

Affinity-chromatography

Storage

Store at -20°C for one year. For short term storage and frequent use, store at 4°C for up to one month. Avoid repeated freeze-thaw cycles.

Anti-Syntaxin 4 Rabbit Monoclonal Antibody - Protein Information

Name STX4

Synonyms STX4A

Function

Plasma membrane t-SNARE that mediates docking of transport vesicles (By similarity). Necessary for the translocation of SLC2A4 from intracellular vesicles to the plasma membrane (By similarity). In neurons, recruited at neurite tips to membrane domains rich in the phospholipid 1-oleoyl-2-palmitoyl-PC (OPPC) which promotes neurite tip surface expression of the dopamine transporter SLC6A3/DAT by facilitating fusion of SLC6A3-containing transport vesicles with the plasma membrane (By similarity). Together with STXB3 and VAMP2, may also play a role in docking/fusion of intracellular GLUT4-containing vesicles with the cell surface in adipocytes and in docking of synaptic vesicles at presynaptic active zones (By similarity). Required for normal hearing (PubMed:36355422).

Cellular Location

Cell membrane {ECO:0000250|UniProtKB:Q08850}; Single-pass type IV membrane protein. Cell projection, neuron projection {ECO:0000250|UniProtKB:Q08850}. Cell projection, stereocilium {ECO:0000250|UniProtKB:P70452}. Note=Localizes to neurite tips in neuronal cells. {ECO:0000250|UniProtKB:Q08850}

Tissue Location

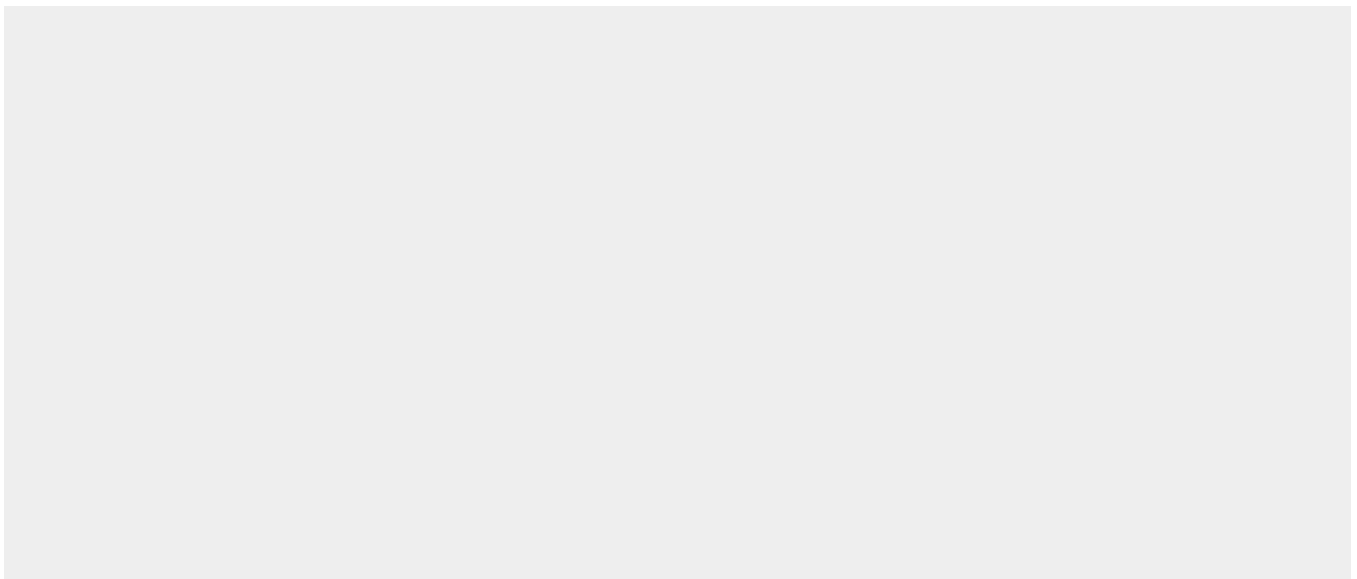
Expressed in neutrophils and neutrophil- differentiated HL-60 cells. Expression in neutrophils increases with differentiation.

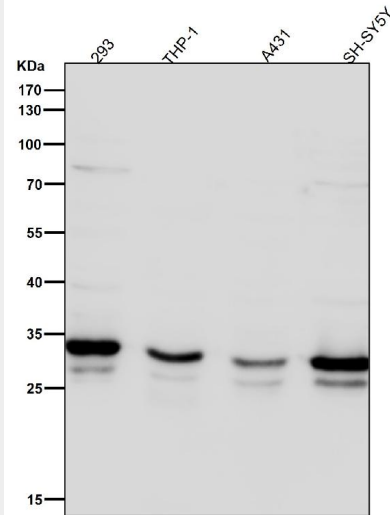
Anti-Syntaxin 4 Rabbit Monoclonal Antibody - Protocols

Provided below are standard protocols that you may find useful for product applications.

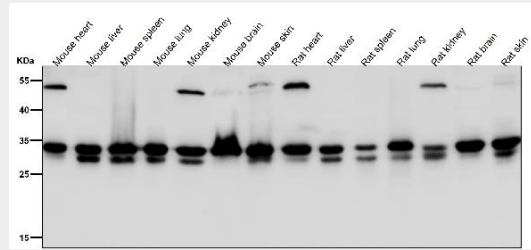
- [Western Blot](#)
- [Blocking Peptides](#)
- [Dot Blot](#)
- [Immunohistochemistry](#)
- [Immunofluorescence](#)
- [Immunoprecipitation](#)
- [Flow Cytometry](#)
- [Cell Culture](#)

Anti-Syntaxin 4 Rabbit Monoclonal Antibody - Images

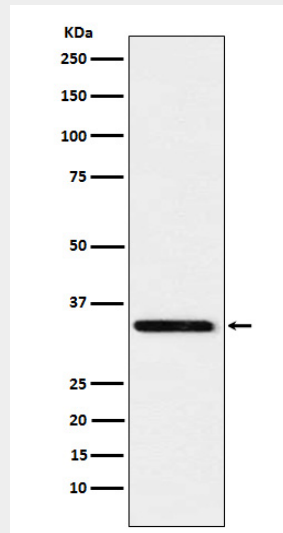




All lanes use the Antibody at 1:6K dilution for 1 hour at room temperature.



All lanes use the Antibody at 1:6K dilution for 1 hour at room temperature.



Western blot analysis of Syntaxin 4 expression in A431 cell lysate.