

Anti-Syntaxin Rabbit Monoclonal Antibody Catalog # ABO15539

Specification

Anti-Syntaxin Rabbit Monoclonal Antibody - Product Information

Application	WB, IP
Primary Accession	P61266
Host	Rabbit
Isotype	IgG
Reactivity	Rat, Human, Mouse
Clonality	Monoclonal
Format	Liquid

Description

Anti-Syntaxin Rabbit Monoclonal Antibody . Tested in WB, IP applications. This antibody reacts with Human, Mouse, Rat.

Anti-Syntaxin Rabbit Monoclonal Antibody - Additional Information

Gene ID 112755

Other Names

Syntaxin-1B, Syntaxin-1B1, Syntaxin-1B2, STX1B, STX1B1, STX1B2

Calculated MW

33 kDa KDa

Application Details

WB 1:1000-1:5000
IP 1:50

Contents

Rabbit IgG in phosphate buffered saline, pH 7.4, 150mM NaCl, 0.02% sodium azide and 50% glycerol, 0.4-0.5mg/ml BSA.

Immunogen

A synthesized peptide derived from human Syntaxin

Purification

Affinity-chromatography

Storage

Store at -20°C for one year. For short term storage and frequent use, store at 4°C for up to one month. Avoid repeated freeze-thaw cycles.

Anti-Syntaxin Rabbit Monoclonal Antibody - Protein Information

Name STX1B

Synonyms STX1B1, STX1B2

Function

Potentially involved in docking of synaptic vesicles at presynaptic active zones. May mediate Ca(2+)-regulation of exocytosis acrosomal reaction in sperm (By similarity).

Cellular Location

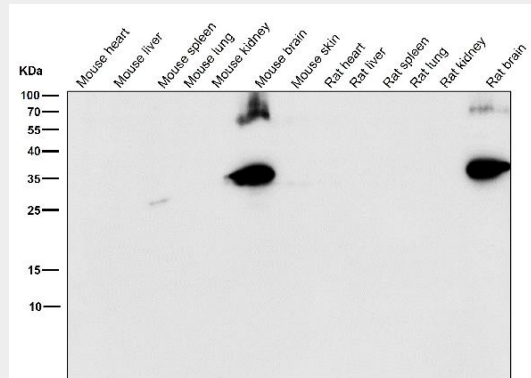
[Isoform 1]: Membrane; Single-pass type IV membrane protein

Anti-Syntaxin Rabbit Monoclonal Antibody - Protocols

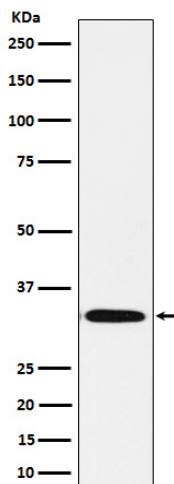
Provided below are standard protocols that you may find useful for product applications.

- [Western Blot](#)
- [Blocking Peptides](#)
- [Dot Blot](#)
- [Immunohistochemistry](#)
- [Immunofluorescence](#)
- [Immunoprecipitation](#)
- [Flow Cytometry](#)
- [Cell Culture](#)

Anti-Syntaxin Rabbit Monoclonal Antibody - Images



All lanes use the Antibody at 1:5K dilution for 1 hour at room temperature.



Western blot analysis of Syntaxin expression in Human fetal brain lysate.