

Anti-ATP2A1/SERCA1 Rabbit Monoclonal Antibody
Catalog # ABO15525**Specification****Anti-ATP2A1/SERCA1 Rabbit Monoclonal Antibody - Product Information**

Application	WB, IHC, IP
Primary Accession	O14983
Host	Rabbit
Isotype	IgG
Reactivity	Human
Clonality	Monoclonal
Format	Liquid

Description

Anti-ATP2A1/SERCA1 Rabbit Monoclonal Antibody . Tested in WB, IHC, IP applications. This antibody reacts with Human.

Anti-ATP2A1/SERCA1 Rabbit Monoclonal Antibody - Additional Information

Gene ID 487

Other Names

Sarcoplasmic/endoplasmic reticulum calcium ATPase 1, SERCA1, SR Ca(2+)-ATPase 1, 7.2.2.10, Calcium pump 1, Calcium-transporting ATPase sarcoplasmic reticulum type, fast twitch skeletal muscle isoform, Endoplasmic reticulum class 1/2 Ca(2+) ATPase, ATP2A1 ([HGNC:811](http://www.genenames.org/cgi-bin/gene_symbol_report?hgnc_id=811))

Calculated MW

110 kDa KDa

Application Details

WB 1:1000-1:5000
IHC 1:50-1:200
IP 1:50

Contents

Rabbit IgG in phosphate buffered saline, pH 7.4, 150mM NaCl, 0.02% sodium azide and 50% glycerol, 0.4-0.5mg/ml BSA.

Immunogen

A synthesized peptide derived from human ATP2A1/SERCA1

Purification

Affinity-chromatography

Storage

Store at -20°C for one year. For short term storage and frequent use, store at 4°C for up to one month. Avoid repeated freeze-thaw cycles.

Anti-ATP2A1/SERCA1 Rabbit Monoclonal Antibody - Protein Information

Name ATP2A1 ([HGNC:811](#))

Function

Key regulator of striated muscle performance by acting as the major Ca²⁺ ATPase responsible for the reuptake of cytosolic Ca²⁺ into the sarcoplasmic reticulum. Catalyzes the hydrolysis of ATP coupled with the translocation of calcium from the cytosol to the sarcoplasmic reticulum lumen (By similarity). Contributes to calcium sequestration involved in muscular excitation/contraction (PubMed:<<http://www.uniprot.org/citations/10914677>>).

Cellular Location

Endoplasmic reticulum membrane {ECO:0000250|UniProtKB:P04191}; Multi-pass membrane protein {ECO:0000250|UniProtKB:P04191}. Sarcoplasmic reticulum membrane {ECO:0000250|UniProtKB:P04191}; Multi-pass membrane protein {ECO:0000250|UniProtKB:P04191}

Tissue Location

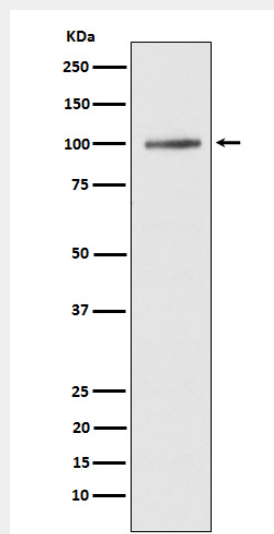
Skeletal muscle, fast twitch muscle (type II) fibers.

Anti-ATP2A1/SERCA1 Rabbit Monoclonal Antibody - Protocols

Provided below are standard protocols that you may find useful for product applications.

- [Western Blot](#)
- [Blocking Peptides](#)
- [Dot Blot](#)
- [Immunohistochemistry](#)
- [Immunofluorescence](#)
- [Immunoprecipitation](#)
- [Flow Cytometry](#)
- [Cell Culture](#)

Anti-ATP2A1/SERCA1 Rabbit Monoclonal Antibody - Images



Western blot analysis of ATP2A1/SERCA1 expression in human fetal muscle lysate.