

Anti-Alpha actinin 2 Rabbit Monoclonal Antibody Catalog # ABO15524

Specification

Anti-Alpha actinin 2 Rabbit Monoclonal Antibody - Product Information

Application	WB, IHC, IP
Primary Accession	P35609
Host	Rabbit
Isotype	IgG
Reactivity	Rat, Human, Mouse
Clonality	Monoclonal
Format	Liquid

Description

Anti-Alpha actinin 2 Rabbit Monoclonal Antibody . Tested in WB, IHC, IP applications. This antibody reacts with Human, Mouse, Rat.

Anti-Alpha actinin 2 Rabbit Monoclonal Antibody - Additional Information

Gene ID 88

Other Names

Alpha-actinin-2, Alpha-actinin skeletal muscle isoform 2, F-actin cross-linking protein, ACTN2

Calculated MW

103 kDa KDa

Application Details

WB 1:1000-1:5000
IHC 1:50-1:200
IP 1:30

Contents

Rabbit IgG in phosphate buffered saline, pH 7.4, 150mM NaCl, 0.02% sodium azide and 50% glycerol, 0.4-0.5mg/ml BSA.

Immunogen

A synthesized peptide derived from human Alpha actinin 2

Purification

Affinity-chromatography

Storage

Store at -20°C for one year. For short term storage and frequent use, store at 4°C for up to one month. Avoid repeated freeze-thaw cycles.

Anti-Alpha actinin 2 Rabbit Monoclonal Antibody - Protein Information

Name ACTN2

Function

F-actin cross-linking protein which is thought to anchor actin to a variety of intracellular structures. This is a bundling protein.

Cellular Location

Cytoplasm, myofibril, sarcomere, Z line. Note=Colocalizes with MYOZ1 and FLNC at the Z-lines of skeletal muscle

Tissue Location

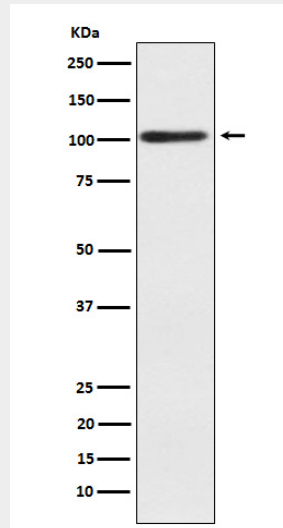
Expressed in both skeletal and cardiac muscle.

Anti-Alpha actinin 2 Rabbit Monoclonal Antibody - Protocols

Provided below are standard protocols that you may find useful for product applications.

- [Western Blot](#)
- [Blocking Peptides](#)
- [Dot Blot](#)
- [Immunohistochemistry](#)
- [Immunofluorescence](#)
- [Immunoprecipitation](#)
- [Flow Cytometry](#)
- [Cell Culture](#)

Anti-Alpha actinin 2 Rabbit Monoclonal Antibody - Images



Western blot analysis of Alpha actinin 2 expression in human skeletal muscle lysate.