

Anti-Protein Phosphatase 1 beta Rabbit Monoclonal Antibody
Catalog # ABO15522

Specification

Anti-Protein Phosphatase 1 beta Rabbit Monoclonal Antibody - Product Information

Application	WB, IHC, IF, ICC, IP, FC
Primary Accession	P62140
Host	Rabbit
Isotype	IgG
Reactivity	Rat, Human, Mouse
Clonality	Monoclonal
Format	Liquid

Description

Anti-Protein Phosphatase 1 beta Rabbit Monoclonal Antibody . Tested in WB, IHC, ICC/IF, IP, Flow Cytometry applications. This antibody reacts with Human, Mouse, Rat.

Anti-Protein Phosphatase 1 beta Rabbit Monoclonal Antibody - Additional Information

Gene ID 5500

Other Names

Serine/threonine-protein phosphatase PP1-beta catalytic subunit, PP-1B, PPP1CD, 3.1.3.16, 3.1.3.53, PPP1CB

Calculated MW

37 kDa KDa

Application Details

WB 1:1000-1:5000
IHC 1:50-1:200
ICC/IF 1:50-1:200
IP 1:50
FC 1:30

Contents

Rabbit IgG in phosphate buffered saline, pH 7.4, 150mM NaCl, 0.02% sodium azide and 50% glycerol, 0.4-0.5mg/ml BSA.

Immunogen

A synthesized peptide derived from human Protein Phosphatase 1 beta

Purification

Affinity-chromatography

Storage

Store at -20°C for one year. For short term storage and frequent use, store at 4°C for up to one month. Avoid repeated freeze-thaw cycles.

Anti-Protein Phosphatase 1 beta Rabbit Monoclonal Antibody - Protein Information

Name PPP1CB

Function

Protein phosphatase that associates with over 200 regulatory proteins to form highly specific holoenzymes which dephosphorylate hundreds of biological targets. Protein phosphatase (PP1) is essential for cell division, it participates in the regulation of glycogen metabolism, muscle contractility and protein synthesis. Involved in regulation of ionic conductances and long-term synaptic plasticity. Component of the PTW/PP1 phosphatase complex, which plays a role in the control of chromatin structure and cell cycle progression during the transition from mitosis into interphase. In balance with CSNK1D and CSNK1E, determines the circadian period length, through the regulation of the speed and rhythmicity of PER1 and PER2 phosphorylation. May dephosphorylate CSNK1D and CSNK1E. Dephosphorylates the 'Ser-418' residue of FOXP3 in regulatory T-cells (Treg) from patients with rheumatoid arthritis, thereby inactivating FOXP3 and rendering Treg cells functionally defective (PubMed:23396208). Core component of the SHOC2-MRAS-PP1c (SMP) holophosphatase complex that regulates the MAPK pathway activation (PubMed:35768504, PubMed:35831509, PubMed:36175670). The SMP complex specifically dephosphorylates the inhibitory phosphorylation at 'Ser-259' of RAF1 kinase, 'Ser-365' of BRAF kinase and 'Ser-214' of ARAF kinase, stimulating their kinase activities (PubMed:35768504, PubMed:35831509, PubMed:36175670). The SMP complex enhances the dephosphorylation activity and substrate specificity of PP1c (PubMed:35768504, PubMed:36175670).

Cellular Location

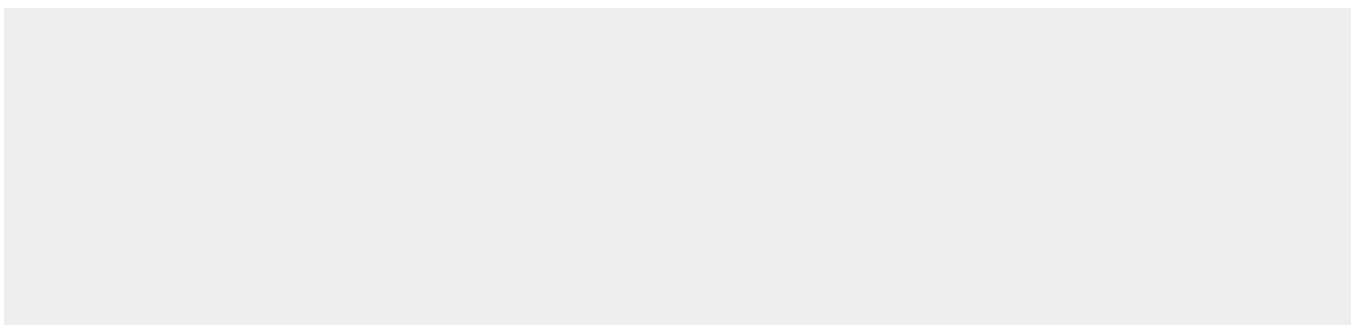
Cytoplasm. Nucleus. Nucleus, nucleoplasm. Nucleus, nucleolus. Note=Highly mobile in cells and can be relocalized through interaction with targeting subunits. In the presence of PPP1R8 relocalizes from the nucleus to nuclear speckles.

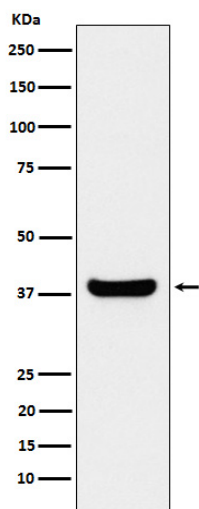
Anti-Protein Phosphatase 1 beta Rabbit Monoclonal Antibody - Protocols

Provided below are standard protocols that you may find useful for product applications.

- [Western Blot](#)
- [Blocking Peptides](#)
- [Dot Blot](#)
- [Immunohistochemistry](#)
- [Immunofluorescence](#)
- [Immunoprecipitation](#)
- [Flow Cytometry](#)
- [Cell Culture](#)

Anti-Protein Phosphatase 1 beta Rabbit Monoclonal Antibody - Images





Western blot analysis of Protein Phosphatase 1 beta expression in Jurkat cell lysate.