

## Anti-CD105 Rabbit Monoclonal Antibody Catalog # ABO15508

### Specification

---

#### Anti-CD105 Rabbit Monoclonal Antibody - Product Information

Application	WB, IHC
Primary Accession	<a href="#">P17813</a>
Host	Rabbit
Isotype	IgG
Reactivity	Human
Clonality	Monoclonal
Format	Liquid

#### Description

Anti-CD105 Rabbit Monoclonal Antibody . Tested in WB, IHC applications. This antibody reacts with Human.

#### Anti-CD105 Rabbit Monoclonal Antibody - Additional Information

**Gene ID** 2022

#### Other Names

Endoglin, CD105, ENG, END

#### Application Details

WB 1:500-1:2000<br>IHC 1:50-1:200

#### Contents

Rabbit IgG in phosphate buffered saline, pH 7.4, 150mM NaCl, 0.02% sodium azide and 50% glycerol, 0.4-0.5mg/ml BSA.

#### Immunogen

A synthesized peptide derived from human CD105

#### Purification

Affinity-chromatography

**Storage**

**Store at -20°C for one year. For short term storage and frequent use, store at 4°C for up to one month. Avoid repeated freeze-thaw cycles.**

#### Anti-CD105 Rabbit Monoclonal Antibody - Protein Information

**Name** ENG

**Synonyms** END

**Function**

Vascular endothelium glycoprotein that plays an important role in the regulation of angiogenesis (PubMed:<a href="http://www.uniprot.org/citations/21737454" target="\_blank">21737454</a>, PubMed:<a href="http://www.uniprot.org/citations/23300529" target="\_blank">23300529</a>). Required for normal structure and integrity of adult vasculature (PubMed:<a href="http://www.uniprot.org/citations/7894484" target="\_blank">7894484</a>). Regulates the migration of vascular endothelial cells (PubMed:<a href="http://www.uniprot.org/citations/17540773" target="\_blank">17540773</a>). Required for normal extraembryonic angiogenesis and for embryonic heart development (By similarity). May regulate endothelial cell shape changes in response to blood flow, which drive vascular remodeling and establishment of normal vascular morphology during angiogenesis (By similarity). May play a critical role in the binding of endothelial cells to integrins and/or other RGD receptors (PubMed:<a href="http://www.uniprot.org/citations/1692830" target="\_blank">1692830</a>). Acts as a TGF-beta coreceptor and is involved in the TGF-beta/BMP signaling cascade that ultimately leads to the activation of SMAD transcription factors (PubMed:<a href="http://www.uniprot.org/citations/21737454" target="\_blank">21737454</a>, PubMed:<a href="http://www.uniprot.org/citations/22347366" target="\_blank">22347366</a>, PubMed:<a href="http://www.uniprot.org/citations/23300529" target="\_blank">23300529</a>, PubMed:<a href="http://www.uniprot.org/citations/8370410" target="\_blank">8370410</a>). Required for GDF2/BMP9 signaling through SMAD1 in endothelial cells and modulates TGFB1 signaling through SMAD3 (PubMed:<a href="http://www.uniprot.org/citations/21737454" target="\_blank">21737454</a>, PubMed:<a href="http://www.uniprot.org/citations/22347366" target="\_blank">22347366</a>, PubMed:<a href="http://www.uniprot.org/citations/23300529" target="\_blank">23300529</a>).

#### Cellular Location

Cell membrane; Single-pass type I membrane protein

#### Tissue Location

Detected on umbilical vein endothelial cells (PubMed:10625079). Detected in placenta (at protein level) (PubMed:1692830). Detected on endothelial cells (PubMed:1692830)

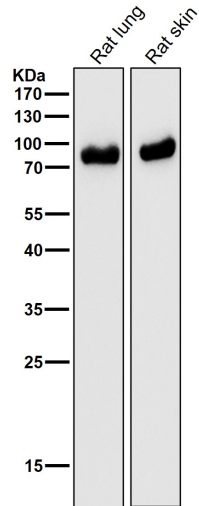
### Anti-CD105 Rabbit Monoclonal Antibody - Protocols

Provided below are standard protocols that you may find useful for product applications.

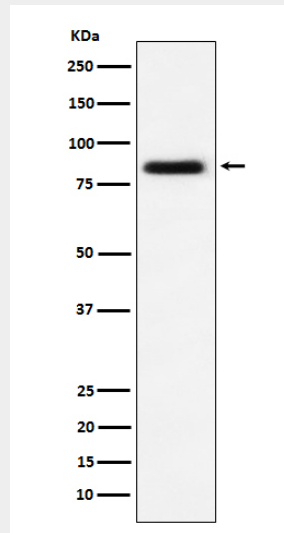
- [Western Blot](#)
- [Blocking Peptides](#)
- [Dot Blot](#)
- [Immunohistochemistry](#)
- [Immunofluorescence](#)
- [Immunoprecipitation](#)
- [Flow Cytometry](#)
- [Cell Culture](#)

### Anti-CD105 Rabbit Monoclonal Antibody - Images





All lanes use the Antibody at 1:3K dilution for 1 hour at room temperature.



Western blot analysis of CD105 expression in HUVEC cell lysate.