

Anti-Thyroglobulin Rabbit Monoclonal Antibody
Catalog # ABO15506**Specification****Anti-Thyroglobulin Rabbit Monoclonal Antibody - Product Information**

Application	WB, IHC, IP
Primary Accession	P01266
Host	Rabbit
Isotype	IgG
Reactivity	Human
Clonality	Monoclonal
Format	Liquid

Description

Anti-Thyroglobulin Rabbit Monoclonal Antibody . Tested in WB, IHC, IP applications. This antibody reacts with Human.

Anti-Thyroglobulin Rabbit Monoclonal Antibody - Additional Information

Gene ID 7038

Other Names

Thyroglobulin, Tg, TG (http://www.genenames.org/cgi-bin/gene_symbol_report?hgnc_id=11764)
HGNC:11764

Calculated MW

305 kDa KDa

Application Details

WB 1:1000-1:5000
IHC 1:50-1:200
IP 1:50

Contents

Rabbit IgG in phosphate buffered saline, pH 7.4, 150mM NaCl, 0.02% sodium azide and 50% glycerol, 0.4-0.5mg/ml BSA.

Immunogen

A synthesized peptide derived from human Thyroglobulin

Purification

Affinity-chromatography

Storage

Store at -20°C for one year. For short term storage and frequent use, store at 4°C for up to one month. Avoid repeated freeze-thaw cycles.

Anti-Thyroglobulin Rabbit Monoclonal Antibody - Protein Information

Name TG ([HGNC:11764](#))

Function

Acts as a substrate for the production of iodinated thyroid hormones thyroxine (T4) and triiodothyronine (T3) (PubMed:[17532758](http://www.uniprot.org/citations/17532758), PubMed:[32025030](http://www.uniprot.org/citations/32025030) target="_blank">32025030). The synthesis of T3 and T4 involves iodination of selected tyrosine residues of TG/thyroglobulin followed by their oxidative coupling in the thyroid follicle lumen (PubMed:[32025030](http://www.uniprot.org/citations/32025030) target="_blank">32025030). Following TG re-internalization and lysosomal-mediated proteolysis, T3 and T4 are released from the polypeptide backbone leading to their secretion into the bloodstream (PubMed:[32025030](http://www.uniprot.org/citations/32025030) target="_blank">32025030). One dimer produces 7 thyroid hormone molecules (PubMed:[32025030](http://www.uniprot.org/citations/32025030) target="_blank">32025030).

Cellular Location

Secreted. Note=Secreted into the thyroid follicle lumen (PubMed:19509106). Localizes to colloid globules, a structure formed in the thyroid follicle lumen consisting of cross-linked TG arranged in concentric layers (PubMed:11082042, PubMed:8626858).

Tissue Location

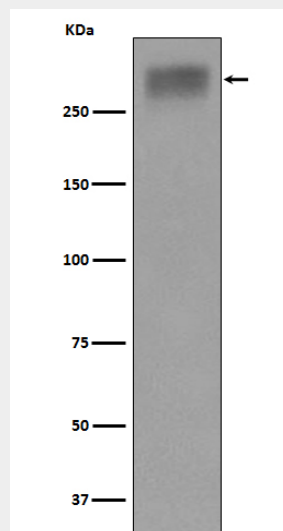
Specifically expressed in the thyroid gland.

Anti-Thyroglobulin Rabbit Monoclonal Antibody - Protocols

Provided below are standard protocols that you may find useful for product applications.

- [Western Blot](#)
- [Blocking Peptides](#)
- [Dot Blot](#)
- [Immunohistochemistry](#)
- [Immunofluorescence](#)
- [Immunoprecipitation](#)
- [Flow Cytometry](#)
- [Cell Culture](#)

Anti-Thyroglobulin Rabbit Monoclonal Antibody - Images



Western blot analysis of Thyroglobulin expression in Human thyroid lysate.