

Anti-Pancreatic Lipase [PNLIP] Rabbit Monoclonal Antibody
Catalog # ABO15504**Specification****Anti-Pancreatic Lipase [PNLIP] Rabbit Monoclonal Antibody - Product Information**

Application	WB, IHC
Primary Accession	P16233
Host	Rabbit
Isotype	IgG
Reactivity	Human
Clonality	Monoclonal
Format	Liquid

Description

Anti-Pancreatic Lipase [PNLIP] Rabbit Monoclonal Antibody . Tested in WB, IHC applications. This antibody reacts with Human.

Anti-Pancreatic Lipase [PNLIP] Rabbit Monoclonal Antibody - Additional Information

Gene ID 5406

Other Names

Pancreatic triacylglycerol lipase, PL, PTL, Pancreatic lipase, 3.1.1.3, PNLIP (http://www.genenames.org/cgi-bin/gene_symbol_report?hgnc_id=9155)

Application Details

WB 1:1000-1:5000
IHC 1:50-1:200

Contents

Rabbit IgG in phosphate buffered saline, pH 7.4, 150mM NaCl, 0.02% sodium azide and 50% glycerol, 0.4-0.5mg/ml BSA.

Immunogen

A synthesized peptide derived from human Pancreatic Lipase [PNLIP]

Purification

Affinity-chromatography

Storage

Store at -20°C for one year. For short term storage and frequent use, store at 4°C for up to one month. Avoid repeated freeze-thaw cycles.

Anti-Pancreatic Lipase [PNLIP] Rabbit Monoclonal Antibody - Protein Information

Name PNLIP ([HGNC:9155](#))

Function

Plays an important role in fat metabolism. It preferentially splits the esters of long-chain fatty acids at positions 1 and 3, producing mainly 2-monoacylglycerol and free fatty acids, and shows considerably higher activity against insoluble emulsified substrates than against soluble ones.

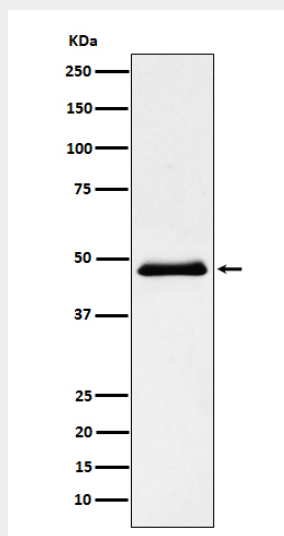
Cellular Location
Secreted.

Anti-Pancreatic Lipase [PNLIP] Rabbit Monoclonal Antibody - Protocols

Provided below are standard protocols that you may find useful for product applications.

- [Western Blot](#)
- [Blocking Peptides](#)
- [Dot Blot](#)
- [Immunohistochemistry](#)
- [Immunofluorescence](#)
- [Immunoprecipitation](#)
- [Flow Cytometry](#)
- [Cell Culture](#)

Anti-Pancreatic Lipase [PNLIP] Rabbit Monoclonal Antibody - Images



Western blot analysis of Pancreatic Lipase (PNLIP) expression in Human pancreas lysate.