

Anti-H Cadherin Rabbit Monoclonal Antibody
Catalog # ABO15494**Specification**

Anti-H Cadherin Rabbit Monoclonal Antibody - Product Information

Application	WB, IHC
Primary Accession	P55290
Host	Rabbit
Isotype	IgG
Reactivity	Rat, Human, Mouse
Clonality	Monoclonal
Format	Liquid

Description

Anti-H Cadherin Rabbit Monoclonal Antibody . Tested in WB, IHC applications. This antibody reacts with Human, Mouse, Rat.

Anti-H Cadherin Rabbit Monoclonal Antibody - Additional Information

Gene ID 1012

Other Names

Cadherin-13, Heart cadherin, H-cadherin, P105, Truncated cadherin, T-cad, T-cadherin, CDH13, CDHH

Application Details

WB 1:500-1:2000
IHC 1:50-1:200

Contents

Rabbit IgG in phosphate buffered saline, pH 7.4, 150mM NaCl, 0.02% sodium azide and 50% glycerol, 0.4-0.5mg/ml BSA.

Immunogen

A synthesized peptide derived from human H Cadherin

Purification

Affinity-chromatography

Storage

Store at -20°C for one year. For short term storage and frequent use, store at 4°C for up to one month. Avoid repeated freeze-thaw cycles.

Anti-H Cadherin Rabbit Monoclonal Antibody - Protein Information

Name CDH13

Synonyms CDHH

Function

Cadherins are calcium-dependent cell adhesion proteins. They preferentially interact with themselves in a homophilic manner in connecting cells; cadherins may thus contribute to the sorting of heterogeneous cell types. May act as a negative regulator of neural cell growth.

Cellular Location

Cell membrane {ECO:0000250|UniProtKB:Q9WTR5}; Lipid-anchor, GPI-anchor. Cytoplasm {ECO:0000250|UniProtKB:Q9WTR5}

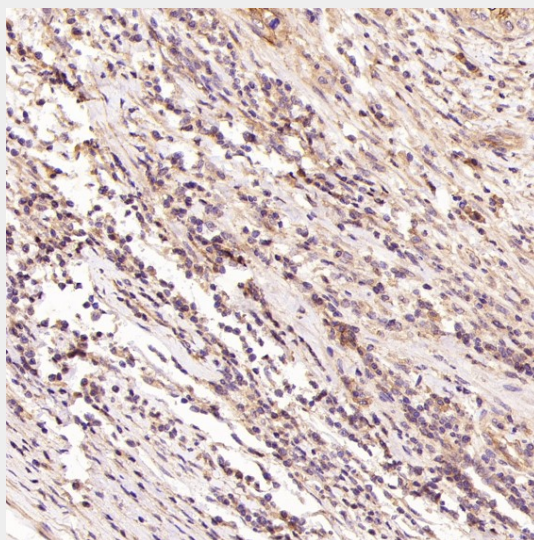
Tissue Location

Highly expressed in heart. In the CNS, expressed in cerebral cortex, medulla, hippocampus, amygdala, thalamus and substantia nigra. No expression detected in cerebellum or spinal cord

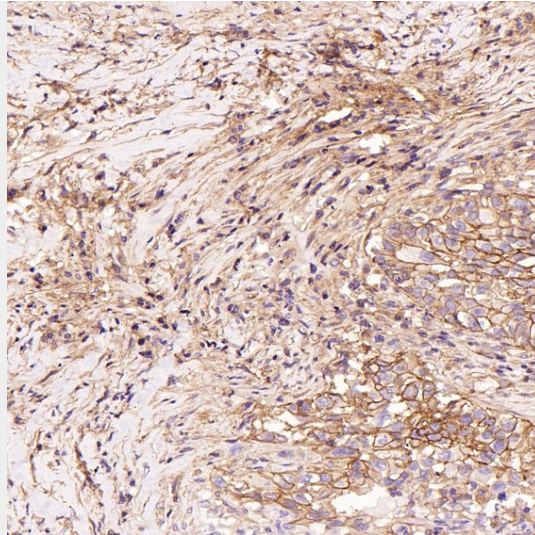
Anti-H Cadherin Rabbit Monoclonal Antibody - Protocols

Provided below are standard protocols that you may find useful for product applications.

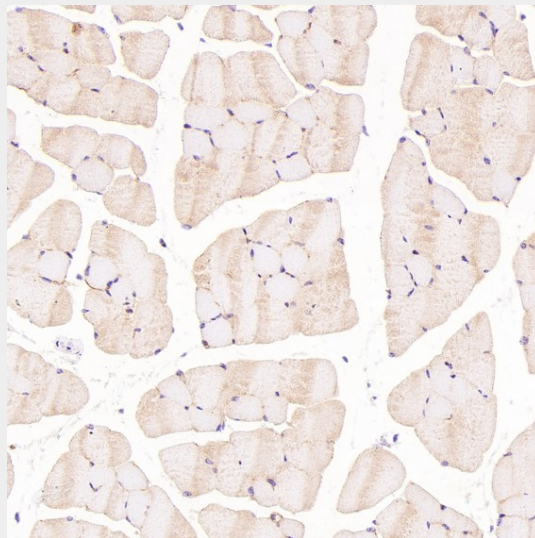
- [Western Blot](#)
- [Blocking Peptides](#)
- [Dot Blot](#)
- [Immunohistochemistry](#)
- [Immunofluorescence](#)
- [Immunoprecipitation](#)
- [Flow Cytometry](#)
- [Cell Culture](#)

Anti-H Cadherin Rabbit Monoclonal Antibody - Images

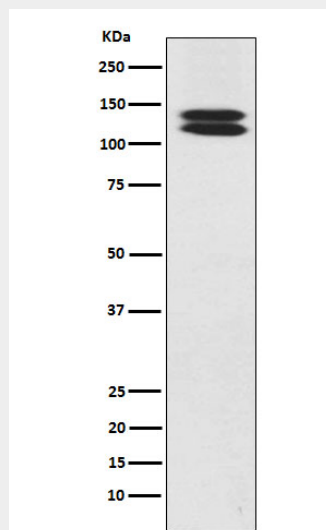
Immunohistochemical analysis of paraffin-embedded Human cervical cancer, using the Antibody at 1:100 dilution.



Immunohistochemical analysis of paraffin-embedded Human squamous cell carcinoma , using the Antibody at 1:100 dilution.



Immunohistochemical analysis of paraffin-embedded Mouse skeletal muscle, using the Antibody at 1:100 dilution.



Western blot analysis of H Cadherin expression in Human fetal heart lysate.