

Anti-CD27 Rabbit Monoclonal Antibody Catalog # ABO15478

Specification

Anti-CD27 Rabbit Monoclonal Antibody - Product Information

Application	WB, IF, ICC, FC
Primary Accession	P26842
Host	Rabbit
Isotype	IgG
Reactivity	Rat, Human
Clonality	Monoclonal
Format	Liquid

Description

Anti-CD27 Rabbit Monoclonal Antibody . Tested in WB, ICC/IF, Flow Cytometry applications. This antibody reacts with Human, Rat.

Anti-CD27 Rabbit Monoclonal Antibody - Additional Information

Gene ID 939

Other Names

CD27 antigen, CD27L receptor, T-cell activation antigen CD27, T14, Tumor necrosis factor receptor superfamily member 7 {ECO:0000312|HGNC:HGNC:11922}, CD27, CD27 ([HGNC:11922](http://www.genenames.org/cgi-bin/gene_symbol_report?hgnc_id=11922))

Application Details

WB 1:500-1:2000
ICC/IF 1:50-1:200
FC 1:50

Contents

Rabbit IgG in phosphate buffered saline, pH 7.4, 150mM NaCl, 0.02% sodium azide and 50% glycerol, 0.4-0.5mg/ml BSA.

Immunogen

A synthesized peptide derived from human CD27

Purification

Affinity-chromatography

Storage

Store at -20°C for one year. For short term storage and frequent use, store at 4°C for up to one month. Avoid repeated freeze-thaw cycles.

Anti-CD27 Rabbit Monoclonal Antibody - Protein Information

Name CD27 ([HGNC:11922](#))

Function

Costimulatory immune-checkpoint receptor expressed at the surface of T-cells, NK-cells and B-cells which binds to and is activated by its ligand CD70/CD27L expressed by B-cells (PubMed:28011863). The CD70-CD27 signaling pathway mediates antigen- specific T-cell activation and expansion which in turn provides immune surveillance of B-cells (PubMed:28011863). Mechanistically, CD70 ligation activates the TRAF2-PTPN6 axis that subsequently inhibits LCK phosphorylation to promote phenotypic and transcriptional adaptations of T-cell memory (PubMed:38354704). In addition, activation by CD70 on early progenitor cells provides a negative feedback signal to leukocyte differentiation during immune activation and thus modulates hematopoiesis (By similarity). Negatively regulates the function of Th2 lymphocytes in the adipose tissue (By similarity).

Cellular Location

Cell membrane; Single-pass type I membrane protein

Tissue Location

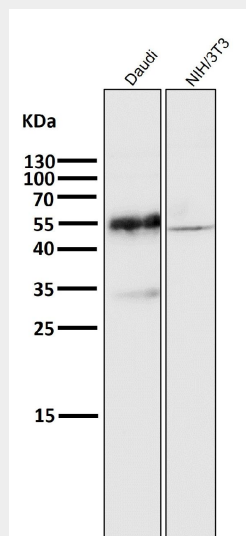
Found in most T-lymphocytes.

Anti-CD27 Rabbit Monoclonal Antibody - Protocols

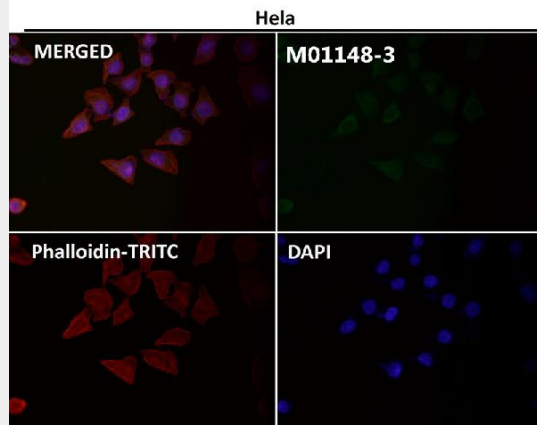
Provided below are standard protocols that you may find useful for product applications.

- [Western Blot](#)
- [Blocking Peptides](#)
- [Dot Blot](#)
- [Immunohistochemistry](#)
- [Immunofluorescence](#)
- [Immunoprecipitation](#)
- [Flow Cytometry](#)
- [Cell Culture](#)

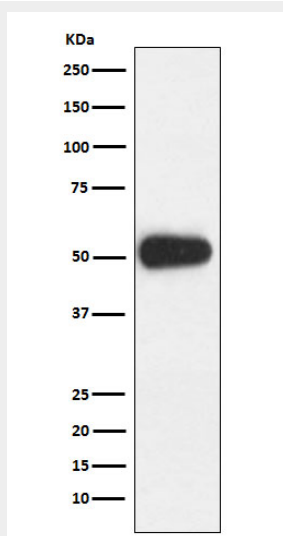
Anti-CD27 Rabbit Monoclonal Antibody - Images



All lanes use the Antibody at 1:3K dilution for 1 hour at room temperature.



Immunofluorescent analysis using the Antibody at 1:150 dilution.



Western blot analysis of CD27 expression in Ramos cell lysate.