

Anti-Syntaxin 3 Rabbit Monoclonal Antibody
Catalog # ABO15476**Specification****Anti-Syntaxin 3 Rabbit Monoclonal Antibody - Product Information**

Application	WB, IHC, IF, ICC, FC
Primary Accession	Q13277
Host	Rabbit
Isotype	IgG
Reactivity	Rat, Human, Mouse
Clonality	Monoclonal
Format	Liquid

Description

Anti-Syntaxin 3 Rabbit Monoclonal Antibody . Tested in WB, IHC, ICC/IF, Flow Cytometry applications. This antibody reacts with Human, Mouse, Rat.

Anti-Syntaxin 3 Rabbit Monoclonal Antibody - Additional Information

Gene ID 6809

Other Names

Syntaxin-3, STX3, STX3A

Calculated MW

33 kDa KDa

Application Details

WB 1:500-1:2000
IHC 1:50-1:200
ICC/IF 1:50-1:200
FC 1:50

Contents

Rabbit IgG in phosphate buffered saline, pH 7.4, 150mM NaCl, 0.02% sodium azide and 50% glycerol, 0.4-0.5mg/ml BSA.

Immunogen

A synthesized peptide derived from human Syntaxin 3

Purification

Affinity-chromatography

Storage

Store at -20°C for one year. For short term storage and frequent use, store at 4°C for up to one month. Avoid repeated freeze-thaw cycles.

Anti-Syntaxin 3 Rabbit Monoclonal Antibody - Protein Information

Name STX3

Synonyms STX3A

Function

Potentially involved in docking of synaptic vesicles at presynaptic active zones. Apical receptor involved in membrane fusion of apical vesicles.

Cellular Location

[Isoform A]: Apical cell membrane; Single-pass type IV membrane protein. Note=Localized to the inner and outer plexiform layers, the cell body and the inner segments of photoreceptors {ECO:0000250|UniProtKB:Q64704}

Tissue Location

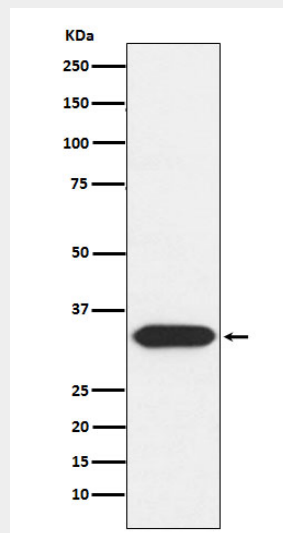
[Isoform A]: Expressed in small intestine, kidney, pancreas, placenta as well as in retina. Weaker expression in lung, liver and heart. Not expressed in brain and skeletal muscle [Isoform 3]: Ubiquitously expressed.

Anti-Syntaxin 3 Rabbit Monoclonal Antibody - Protocols

Provided below are standard protocols that you may find useful for product applications.

- [Western Blot](#)
- [Blocking Peptides](#)
- [Dot Blot](#)
- [Immunohistochemistry](#)
- [Immunofluorescence](#)
- [Immunoprecipitation](#)
- [Flow Cytometry](#)
- [Cell Culture](#)

Anti-Syntaxin 3 Rabbit Monoclonal Antibody - Images



Western blot analysis of Syntaxin 3 expression in HepG2 cell lysate.