

Anti-TTC11 Rabbit Monoclonal Antibody Catalog # ABO15473

Specification

Anti-TTC11 Rabbit Monoclonal Antibody - Product Information

Application	WB, IHC, IF, ICC
Primary Accession	Q9Y3D6
Host	Rabbit
Isotype	IgG
Reactivity	Human
Clonality	Monoclonal
Format	Liquid

Description

Anti-TTC11 Rabbit Monoclonal Antibody . Tested in WB, IHC, ICC/IF applications. This antibody reacts with Human.

Anti-TTC11 Rabbit Monoclonal Antibody - Additional Information

Gene ID 51024

Other Names

Mitochondrial fission 1 protein, FIS1 homolog, hFis1, Tetratricopeptide repeat protein 11, TPR repeat protein 11, FIS1, TTC11

Calculated MW

17 kDa KDa

Application Details

WB 1:500-1:2000
IHC 1:50-1:200
ICC/IF 1:50-1:200

Contents

Rabbit IgG in phosphate buffered saline, pH 7.4, 150mM NaCl, 0.02% sodium azide and 50% glycerol, 0.4-0.5mg/ml BSA.

Immunogen

A synthesized peptide derived from human TTC11

Purification

Affinity-chromatography

Storage

Store at -20°C for one year. For short term storage and frequent use, store at 4°C for up to one month. Avoid repeated freeze-thaw cycles.

Anti-TTC11 Rabbit Monoclonal Antibody - Protein Information

Name FIS1

Synonyms TTC11

Function

Involved in the fragmentation of the mitochondrial network and its perinuclear clustering (PubMed:12783892, PubMed:12861026, PubMed:14996942, PubMed:23283981). Plays a minor role in the recruitment and association of the fission mediator dynamin-related protein 1 (DNM1L) to the mitochondrial surface and mitochondrial fission (PubMed:12861026, PubMed:16118244, PubMed:23283981, PubMed:23530241, PubMed:24196833). May not be essential for the assembly of functional fission complexes and the subsequent membrane scission event (PubMed:23530241, PubMed:24196833). Also mediates peroxisomal fission (PubMed:16107562). May act when the products of fission are directed toward mitochondrial homeostasis, mitophagy, or apoptosis (PubMed:24196833). Can induce cytochrome c release from the mitochondrion to the cytosol, ultimately leading to apoptosis (PubMed:12783892).

Cellular Location

Mitochondrion outer membrane; Single-pass membrane protein. Peroxisome membrane; Single-pass membrane protein

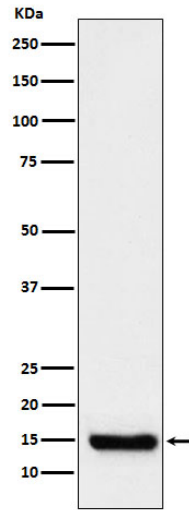
Anti-TTC11 Rabbit Monoclonal Antibody - Protocols

Provided below are standard protocols that you may find useful for product applications.

- [Western Blot](#)
- [Blocking Peptides](#)
- [Dot Blot](#)
- [Immunohistochemistry](#)
- [Immunofluorescence](#)
- [Immunoprecipitation](#)
- [Flow Cytometry](#)
- [Cell Culture](#)

Anti-TTC11 Rabbit Monoclonal Antibody - Images





Western blot analysis of TTC11 expression in Raji cell lysate.