

**Anti-GSTO1 Rabbit Monoclonal Antibody**  
Catalog # ABO15472**Specification****Anti-GSTO1 Rabbit Monoclonal Antibody - Product Information**

Application	WB, IHC, IF, ICC
Primary Accession	<a href="#">P78417</a>
Host	Rabbit
Isotype	IgG
Reactivity	Rat, Human
Clonality	Monoclonal
Format	Liquid

**Description**

Anti-GSTO1 Rabbit Monoclonal Antibody . Tested in WB, IHC, ICC/IF applications. This antibody reacts with Human, Rat.

**Anti-GSTO1 Rabbit Monoclonal Antibody - Additional Information**

**Gene ID** 9446

**Other Names**

Glutathione S-transferase omega-1, GSTO-1, 2.5.1.18, Glutathione S-transferase omega 1-1, GSTO 1-1, Glutathione-dependent dehydroascorbate reductase, 1.8.5.1, Monomethylarsonic acid reductase, MMA(V) reductase, 1.20.4.2, S-(Phenacyl)glutathione reductase, SPG-R, GSTO1, GSTTLP28

**Application Details**

WB 1:500-1:2000<br>IHC 1:50-1:200<br>ICC/IF 1:50-1:200

**Contents**

Rabbit IgG in phosphate buffered saline, pH 7.4, 150mM NaCl, 0.02% sodium azide and 50% glycerol, 0.4-0.5mg/ml BSA.

**Immunogen**

A synthesized peptide derived from human GSTO1

**Purification**

Affinity-chromatography

**Storage**

**Store at -20°C for one year. For short term storage and frequent use, store at 4°C for up to one month. Avoid repeated freeze-thaw cycles.**

**Anti-GSTO1 Rabbit Monoclonal Antibody - Protein Information**

**Name** GSTO1

## Synonyms GSTTLP28

### Function

Exhibits glutathione-dependent thiol transferase and dehydroascorbate reductase activities. Has S-(phenacyl)glutathione reductase activity. Has also glutathione S-transferase activity. Participates in the biotransformation of inorganic arsenic and reduces monomethylarsonic acid (MMA) and dimethylarsonic acid.

### Cellular Location

Cytoplasm, cytosol.

### Tissue Location

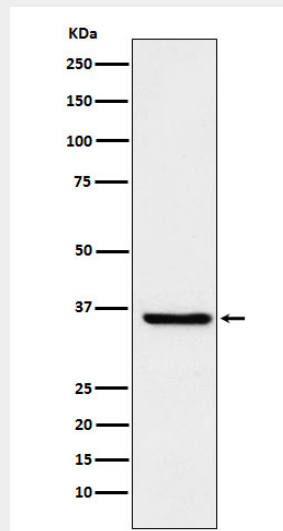
Ubiquitous. Highest expression in liver, pancreas, skeletal muscle, spleen, thymus, colon, blood leukocyte and heart. Lowest expression in brain, placenta and lung.

## Anti-GSTO1 Rabbit Monoclonal Antibody - Protocols

Provided below are standard protocols that you may find useful for product applications.

- [Western Blot](#)
- [Blocking Peptides](#)
- [Dot Blot](#)
- [Immunohistochemistry](#)
- [Immunofluorescence](#)
- [Immunoprecipitation](#)
- [Flow Cytometry](#)
- [Cell Culture](#)

## Anti-GSTO1 Rabbit Monoclonal Antibody - Images



Western blot analysis of glutathione S transferase Omega 1 expression in HepG2 cell lysate.