

Anti-PGAM1 Rabbit Monoclonal Antibody
Catalog # ABO15465**Specification****Anti-PGAM1 Rabbit Monoclonal Antibody - Product Information**

Application	WB, FC
Primary Accession	P18669
Host	Rabbit
Isotype	IgG
Reactivity	Rat, Human, Mouse
Clonality	Monoclonal
Format	Liquid

Description

Anti-PGAM1 Rabbit Monoclonal Antibody . Tested in WB, Flow Cytometry applications. This antibody reacts with Human, Mouse, Rat.

Anti-PGAM1 Rabbit Monoclonal Antibody - Additional Information

Gene ID 5223

Other Names

Phosphoglycerate mutase 1, 5.4.2.11, 5.4.2.4, BPG-dependent PGAM 1, Phosphoglycerate mutase isozyme B, PGAM-B, PGAM1 (http://www.genenames.org/cgi-bin/gene_symbol_report?hgnc_id=8888)>HGNC:8888), PGAMA

Calculated MW

29 kDa KDa

Application Details

WB 1:500-1:2000
FC 1:100

Contents

Rabbit IgG in phosphate buffered saline, pH 7.4, 150mM NaCl, 0.02% sodium azide and 50% glycerol, 0.4-0.5mg/ml BSA.

Immunogen

A synthesized peptide derived from human PGAM1

Purification

Affinity-chromatography

Storage

Store at -20°C for one year. For short term storage and frequent use, store at 4°C for up to one month. Avoid repeated freeze-thaw cycles.

Anti-PGAM1 Rabbit Monoclonal Antibody - Protein Information

Name PGAM1 ([HGNC:8888](#))

Synonyms PGAMA

Function

Catalyzes the interconversion of 2-phosphoglycerate and 3- phosphoglycerate a crucial step in glycolysis, by using 2,3- bisphosphoglycerate (PubMed:[23653202](http://www.uniprot.org/citations/23653202)). Also catalyzes the interconversion of (2R)-2,3-bisphosphoglycerate and (2R)-3-phospho- glyceroyl phosphate (PubMed:[23653202](http://www.uniprot.org/citations/23653202)).

Tissue Location

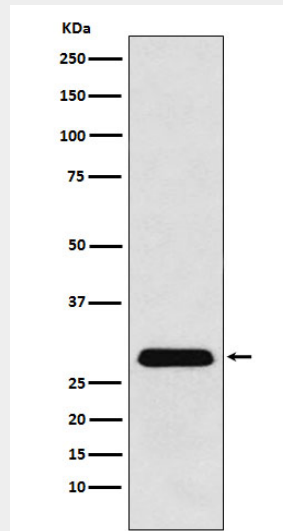
Expressed in the liver and brain. Not found in the muscle.

Anti-PGAM1 Rabbit Monoclonal Antibody - Protocols

Provided below are standard protocols that you may find useful for product applications.

- [Western Blot](#)
- [Blocking Peptides](#)
- [Dot Blot](#)
- [Immunohistochemistry](#)
- [Immunofluorescence](#)
- [Immunoprecipitation](#)
- [Flow Cytometry](#)
- [Cell Culture](#)

Anti-PGAM1 Rabbit Monoclonal Antibody - Images



Western blot analysis of PGAM1 expression in A431 cell lysate.