

**Anti-LysRS Rabbit Monoclonal Antibody**  
Catalog # ABO15462**Specification****Anti-LysRS Rabbit Monoclonal Antibody - Product Information**

Application	WB, IHC, IF, ICC, IP
Primary Accession	<a href="#">Q15046</a>
Host	Rabbit
Isotype	IgG
Reactivity	Rat, Human, Mouse
Clonality	Monoclonal
Format	Liquid

**Description**

Anti-LysRS Rabbit Monoclonal Antibody . Tested in WB, IHC, ICC/IF, IP applications. This antibody reacts with Human, Mouse, Rat.

**Anti-LysRS Rabbit Monoclonal Antibody - Additional Information**

**Gene ID** 3735

**Other Names**

Lysine--tRNA ligase, 2.7.7.-, 6.1.1.6, Lysyl-tRNA synthetase, LysRS, KARS1 ([HGNC:6215](http://www.genenames.org/cgi-bin/gene_symbol_report?hgnc_id=6215)), KARS, KIAA0070

**Calculated MW**

73 kDa KDa

**Application Details**

WB 1:500-1:2000<br>IHC 1:50-1:200<br>ICC/IF 1:50-1:200<br>IP 1:50

**Contents**

Rabbit IgG in phosphate buffered saline, pH 7.4, 150mM NaCl, 0.02% sodium azide and 50% glycerol, 0.4-0.5mg/ml BSA.

**Immunogen**

A synthesized peptide derived from human LysRS

**Purification**

Affinity-chromatography

**Storage**

**Store at -20°C for one year. For short term storage and frequent use, store at 4°C for up to one month. Avoid repeated freeze-thaw cycles.**

**Anti-LysRS Rabbit Monoclonal Antibody - Protein Information**

**Name** KARS1 ([HGNC:6215](#))

**Synonyms** KARS, KIAA0070

### Function

Catalyzes the specific attachment of an amino acid to its cognate tRNA in a 2 step reaction: the amino acid (AA) is first activated by ATP to form AA-AMP and then transferred to the acceptor end of the tRNA (PubMed:[18029264](http://www.uniprot.org/citations/18029264), PubMed:[18272479](http://www.uniprot.org/citations/18272479), PubMed:[9278442](http://www.uniprot.org/citations/9278442)). When secreted, acts as a signaling molecule that induces immune response through the activation of monocyte/macrophages (PubMed:[15851690](http://www.uniprot.org/citations/15851690)). Catalyzes the synthesis of the signaling molecule diadenosine tetraphosphate (Ap4A), and thereby mediates disruption of the complex between HINT1 and MITF and the concomitant activation of MITF transcriptional activity (PubMed:[14975237](http://www.uniprot.org/citations/14975237), PubMed:[19524539](http://www.uniprot.org/citations/19524539), PubMed:[23159739](http://www.uniprot.org/citations/23159739), PubMed:[5338216](http://www.uniprot.org/citations/5338216)).

### Cellular Location

[Isoform Cytoplasmic]: Cytoplasm, cytosol. Cytoplasm. Nucleus. Cell membrane; Peripheral membrane protein. Secreted Note=Secretion is induced by TNF-alpha (PubMed:15851690). Cytosolic in quiescent mast cells. Translocates into the nucleus in response to mast cell activation by immunoglobulin E (PubMed:23159739)

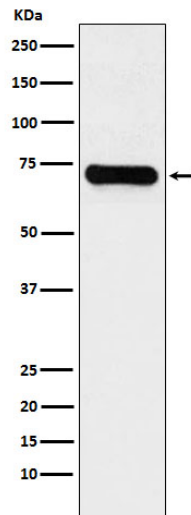
### Anti-LysRS Rabbit Monoclonal Antibody - Protocols

Provided below are standard protocols that you may find useful for product applications.

- [Western Blot](#)
- [Blocking Peptides](#)
- [Dot Blot](#)
- [Immunohistochemistry](#)
- [Immunofluorescence](#)
- [Immunoprecipitation](#)
- [Flow Cytometry](#)
- [Cell Culture](#)

### Anti-LysRS Rabbit Monoclonal Antibody - Images





Western blot analysis of LysRS expression in Jurkat cell lysate.