

Anti-VAMP1 Rabbit Monoclonal Antibody
Catalog # ABO15453**Specification**

Anti-VAMP1 Rabbit Monoclonal Antibody - Product Information

Application	WB, IHC, IF, ICC
Primary Accession	P23763
Host	Rabbit
Isotype	IgG
Reactivity	Rat, Human, Mouse
Clonality	Monoclonal
Format	Liquid

Description

Anti-VAMP1 Rabbit Monoclonal Antibody . Tested in WB, IHC, ICC/IF applications. This antibody reacts with Human, Mouse, Rat.

Anti-VAMP1 Rabbit Monoclonal Antibody - Additional Information

Gene ID 6843

Other Names

Vesicle-associated membrane protein 1, VAMP-1, Synaptobrevin-1, VAMP1, SYB1

Calculated MW

16 kDa KDa

Application Details

WB 1:500-1:2000
IHC 1:50-1:200
ICC/IF 1:50-1:200

Contents

Rabbit IgG in phosphate buffered saline, pH 7.4, 150mM NaCl, 0.02% sodium azide and 50% glycerol, 0.4-0.5mg/ml BSA.

Immunogen

A synthesized peptide derived from human VAMP1

Purification

Affinity-chromatography

Storage

Store at -20°C for one year. For short term storage and frequent use, store at 4°C for up to one month. Avoid repeated freeze-thaw cycles.

Anti-VAMP1 Rabbit Monoclonal Antibody - Protein Information

Name VAMP1

Synonyms SYB1

Function

Involved in the targeting and/or fusion of transport vesicles to their target membrane.

Cellular Location

[Isoform 1]: Cytoplasmic vesicle, secretory vesicle, synaptic vesicle membrane; Single-pass type IV membrane protein. Synapse, synaptosome [Isoform 3]: Mitochondrion outer membrane; Single-pass type IV membrane protein

Tissue Location

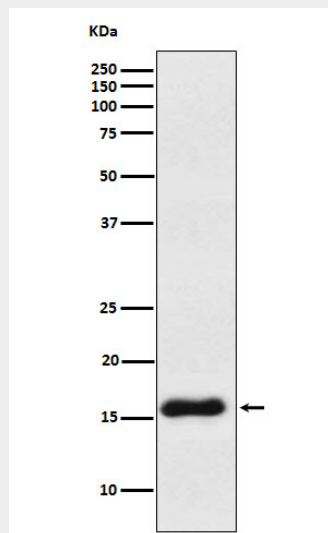
Nervous system, skeletal muscle and adipose tissue.

Anti-VAMP1 Rabbit Monoclonal Antibody - Protocols

Provided below are standard protocols that you may find useful for product applications.

- [Western Blot](#)
- [Blocking Peptides](#)
- [Dot Blot](#)
- [Immunohistochemistry](#)
- [Immunofluorescence](#)
- [Immunoprecipitation](#)
- [Flow Cytometry](#)
- [Cell Culture](#)

Anti-VAMP1 Rabbit Monoclonal Antibody - Images



Western blot analysis of VAMP1 expression in Human cerebellum lysate.