

Anti-c-Myb Rabbit Monoclonal Antibody Catalog # ABO15451

Specification

Anti-c-Myb Rabbit Monoclonal Antibody - Product Information

Application	WB, IHC
Primary Accession	P10242
Host	Rabbit
Isotype	IgG
Reactivity	Human
Clonality	Monoclonal
Format	Liquid

Description

Anti-c-Myb Rabbit Monoclonal Antibody . Tested in WB, IHC applications. This antibody reacts with Human.

Anti-c-Myb Rabbit Monoclonal Antibody - Additional Information

Gene ID 4602

Other Names

Transcriptional activator Myb, Proto-oncogene c-Myb, MYB

Calculated MW

78 kDa KDa

Application Details

WB 1:500-1:2000
IHC 1:50-1:200

Contents

Rabbit IgG in phosphate buffered saline, pH 7.4, 150mM NaCl, 0.02% sodium azide and 50% glycerol, 0.4-0.5mg/ml BSA.

Immunogen

A synthesized peptide derived from human c-Myb

Purification

Affinity-chromatography

Storage

Store at -20°C for one year. For short term storage and frequent use, store at 4°C for up to one month. Avoid repeated freeze-thaw cycles.

Anti-c-Myb Rabbit Monoclonal Antibody - Protein Information

Name MYB

Function

Transcriptional activator; DNA-binding protein that specifically recognize the sequence 5'-YAAC[GT]G-3'. Plays an important role in the control of proliferation and differentiation of hematopoietic progenitor cells.

Cellular Location

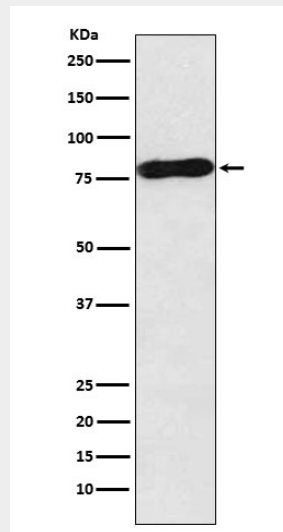
Nucleus {ECO:0000255|PROSITE-ProRule:PRU00625, ECO:0000269|PubMed:19646965}

Anti-c-Myb Rabbit Monoclonal Antibody - Protocols

Provided below are standard protocols that you may find useful for product applications.

- [Western Blot](#)
- [Blocking Peptides](#)
- [Dot Blot](#)
- [Immunohistochemistry](#)
- [Immunofluorescence](#)
- [Immunoprecipitation](#)
- [Flow Cytometry](#)
- [Cell Culture](#)

Anti-c-Myb Rabbit Monoclonal Antibody - Images



Western blot analysis of c-Myb expression in MOLT4 cell lysate.