

Anti-MGEA5 Rabbit Monoclonal Antibody Catalog # ABO15449

Specification

Anti-MGEA5 Rabbit Monoclonal Antibody - Product Information

Application	WB, IHC, IP
Primary Accession	O60502
Host	Rabbit
Isotype	IgG
Reactivity	Human, Mouse
Clonality	Monoclonal
Format	Liquid

Description

Anti-MGEA5 Rabbit Monoclonal Antibody . Tested in WB, IHC, IP applications. This antibody reacts with Human, Mouse.

Anti-MGEA5 Rabbit Monoclonal Antibody - Additional Information

Gene ID 10724

Other Names

Protein O-GlcNAcase {ECO:0000303|PubMed:11148210, ECO:0000303|PubMed:11788610, ECO:0000305}, OGA, 3.2.1.169, Beta-N-acetylglucosaminidase, Beta-N-acetylhexosaminidase, Beta-hexosaminidase, Meningioma-expressed antigen 5, N-acetyl-beta-D-glucosaminidase, N-acetyl-beta-glucosaminidase, Nuclear cytoplasmic O-GlcNAcase and acetyltransferase, NCOAT, OGA {ECO:0000303|PubMed:20863279, ECO:0000312|HGNC:HGNC:7056}

Calculated MW

130 kDa KDa

Application Details

WB 1:1000-1:5000
IHC 1:50-1:200
IP 1:80

Contents

Rabbit IgG in phosphate buffered saline, pH 7.4, 150mM NaCl, 0.02% sodium azide and 50% glycerol, 0.4-0.5mg/ml BSA.

Immunogen

A synthesized peptide derived from human MGEA5

Purification

Affinity-chromatography

Storage

Store at -20°C for one year. For short term storage and frequent use, store at 4°C for up to one month. Avoid repeated freeze-thaw cycles.

Anti-MGEA5 Rabbit Monoclonal Antibody - Protein Information

Name OGA {ECO:0000303|PubMed:20863279, ECO:0000312|HGNC:HGNC:7056}

Function

[Isoform 1]: Cleaves GlcNAc but not GalNAc from O- glycosylated proteins (PubMed:11148210, PubMed:11788610, PubMed:20673219, PubMed:22365600, PubMed:24088714, PubMed:28939839, PubMed:37962578). Deglycosylates a large and diverse number of proteins, such as CRYAB, ELK1, GSDMD, LMNB1 and TAB1 (PubMed:28939839, PubMed:37962578). Can use p-nitrophenyl-beta-GlcNAc and 4-methylumbelliferone-GlcNAc as substrates but not p-nitrophenyl-beta- GalNAc or p-nitrophenyl-alpha-GlcNAc (in vitro) (PubMed:20673219). Does not bind acetyl-CoA and does not have histone acetyltransferase activity (PubMed:24088714).

Cellular Location

[Isoform 3]: Nucleus

Tissue Location

Ubiquitous. Shows highest expression in the brain, placenta and pancreas.

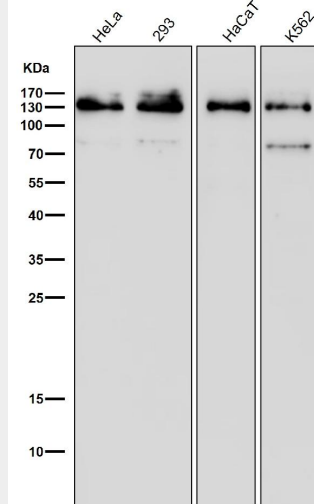
Anti-MGEA5 Rabbit Monoclonal Antibody - Protocols

Provided below are standard protocols that you may find useful for product applications.

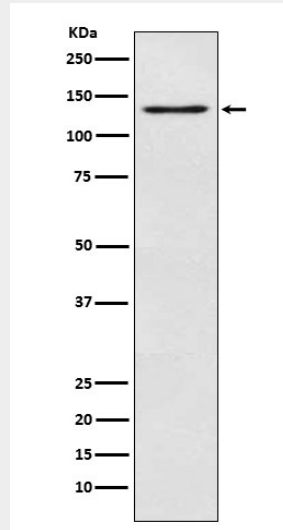
- [Western Blot](#)
- [Blocking Peptides](#)
- [Dot Blot](#)
- [Immunohistochemistry](#)
- [Immunofluorescence](#)
- [Immunoprecipitation](#)
- [Flow Cytometry](#)
- [Cell Culture](#)

Anti-MGEA5 Rabbit Monoclonal Antibody - Images

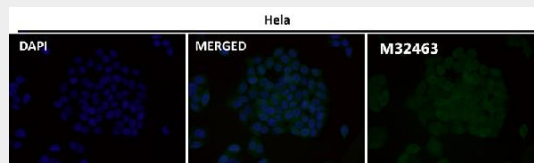




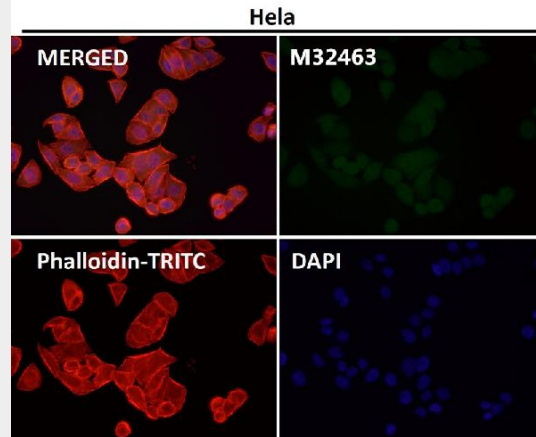
All lanes use the Antibody at 1:500 dilution for 1 hour at room temperature.



Western blot analysis of MGEA5 expression in JAR cell lysate.



Immunofluorescent analysis using the Antibody at 1:50 dilution.



Immunofluorescent analysis using the Antibody at 1:50 dilution.