

Anti-SLC9A1 Rabbit Monoclonal Antibody
Catalog # ABO15444**Specification****Anti-SLC9A1 Rabbit Monoclonal Antibody - Product Information**

Application	WB
Primary Accession	P19634
Host	Rabbit
Isotype	IgG
Reactivity	Human
Clonality	Monoclonal
Format	Liquid

Description

Anti-SLC9A1 Rabbit Monoclonal Antibody . Tested in WB application. This antibody reacts with Human.

Anti-SLC9A1 Rabbit Monoclonal Antibody - Additional Information

Gene ID 6548

Other Names

Sodium/hydrogen exchanger 1, APNH, Na(+)/H(+) antiporter, amiloride-sensitive, Na(+)/H(+) exchanger 1, NHE-1, Solute carrier family 9 member 1, SLC9A1 ([HGNC:11071](http://www.genenames.org/cgi-bin/gene_symbol_report?hgnc_id=11071))

Application Details

WB 1:500-1:2000

Contents

Rabbit IgG in phosphate buffered saline, pH 7.4, 150mM NaCl, 0.02% sodium azide and 50% glycerol, 0.4-0.5mg/ml BSA.

Immunogen

A synthesized peptide derived from human Sodium / Hydrogen Exchanger 1

Purification

Affinity-chromatography

Storage

Store at -20°C for one year. For short term storage and frequent use, store at 4°C for up to one month. Avoid repeated freeze-thaw cycles.

Anti-SLC9A1 Rabbit Monoclonal Antibody - Protein Information

Name SLC9A1 ([HGNC:11071](#))

Function

Electroneutral Na(+) /H(+) antiporter that extrudes Na(+) in exchange for external protons driven by the inward sodium ion chemical gradient, protecting cells from acidification that occurs from metabolism (PubMed:11350981, PubMed:11532004, PubMed:14680478, PubMed:15035633, PubMed:15677483, PubMed:17073455, PubMed:17493937, PubMed:22020933, PubMed:27650500, PubMed:32130622, PubMed:7110335, PubMed:7603840). Exchanges intracellular H(+) ions for extracellular Na(+) in 1:1 stoichiometry (By similarity). Plays a key role in maintaining intracellular pH neutral and cell volume, and thus is important for cell growth, proliferation, migration and survival (PubMed:12947095, PubMed:15096511, PubMed:22020933, PubMed:8901634). In addition, can transport lithium Li(+) and functions also as a Na(+)/Li(+) antiporter (PubMed:7603840). SLC9A1 also functions in membrane anchoring and organization of scaffolding complexes that coordinate signaling inputs (PubMed:15096511).

Cellular Location

Cell membrane; Multi-pass membrane protein. Basolateral cell membrane {ECO:0000250|UniProtKB:P48762}; Multi-pass membrane protein. Note=Localized basolaterally in every epithelial cell, except in the choroid plexus where SLC9A1 is expressed lumenally.

Tissue Location

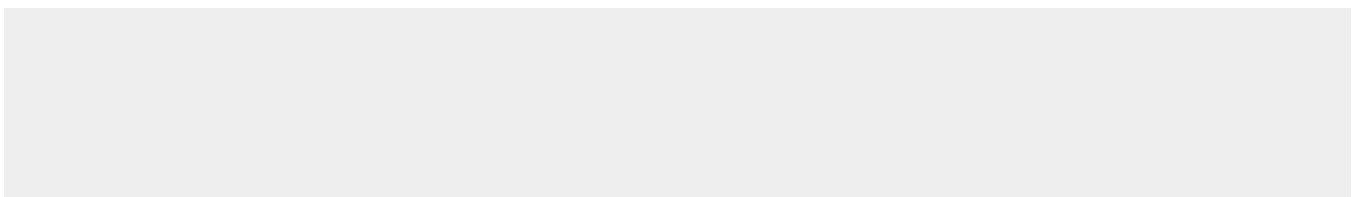
Kidney and intestine.

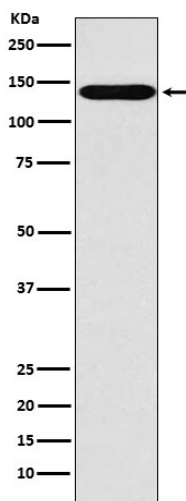
Anti-SLC9A1 Rabbit Monoclonal Antibody - Protocols

Provided below are standard protocols that you may find useful for product applications.

- [Western Blot](#)
- [Blocking Peptides](#)
- [Dot Blot](#)
- [Immunohistochemistry](#)
- [Immunofluorescence](#)
- [Immunoprecipitation](#)
- [Flow Cytometry](#)
- [Cell Culture](#)

Anti-SLC9A1 Rabbit Monoclonal Antibody - Images





Western blot analysis of Sodium / Hydrogen Exchanger 1 expression in MOLT4 cell lysate.