

**Anti-CtBP1 Rabbit Monoclonal Antibody**  
Catalog # ABO15440

**Specification**

---

**Anti-CtBP1 Rabbit Monoclonal Antibody - Product Information**

Application	WB, IHC, IF, ICC, IP
Primary Accession	<a href="#">Q13363</a>
Host	Rabbit
Isotype	IgG
Reactivity	Rat, Human, Mouse
Clonality	Monoclonal
Format	Liquid

**Description**

Anti-CtBP1 Rabbit Monoclonal Antibody . Tested in WB, IHC, ICC/IF, IP applications. This antibody reacts with Human, Mouse, Rat.

**Anti-CtBP1 Rabbit Monoclonal Antibody - Additional Information**

**Gene ID** 1487

**Other Names**

C-terminal-binding protein 1, CtBP1, 1.1.1.-, CTBP1, CTBP

**Calculated MW**

48 kDa KDa

**Application Details**

WB 1:500-1:2000<br>IHC 1:50-1:200<br>ICC/IF 1:50-1:200<br>IP 1:50

**Contents**

Rabbit IgG in phosphate buffered saline, pH 7.4, 150mM NaCl, 0.02% sodium azide and 50% glycerol, 0.4-0.5mg/ml BSA.

**Immunogen**

A synthesized peptide derived from human CtBP1

**Purification**

Affinity-chromatography

**Storage**

**Store at -20°C for one year. For short term storage and frequent use, store at 4°C for up to one month. Avoid repeated freeze-thaw cycles.**

**Anti-CtBP1 Rabbit Monoclonal Antibody - Protein Information**

**Name** CTBP1

## Synonyms CTBP

### Function

Corepressor targeting diverse transcription regulators such as GLIS2 or BCL6. Has dehydrogenase activity. Involved in controlling the equilibrium between tubular and stacked structures in the Golgi complex. Functions in brown adipose tissue (BAT) differentiation.

### Cellular Location

Cytoplasm. Nucleus

### Tissue Location

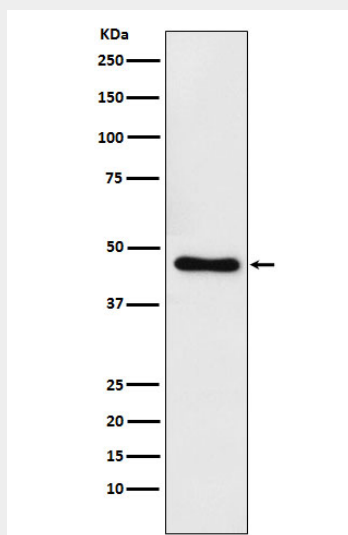
Expressed in germinal center B-cells.

## Anti-CtBP1 Rabbit Monoclonal Antibody - Protocols

Provided below are standard protocols that you may find useful for product applications.

- [Western Blot](#)
- [Blocking Peptides](#)
- [Dot Blot](#)
- [Immunohistochemistry](#)
- [Immunofluorescence](#)
- [Immunoprecipitation](#)
- [Flow Cytometry](#)
- [Cell Culture](#)

## Anti-CtBP1 Rabbit Monoclonal Antibody - Images



Western blot analysis of CtBP1 expression in Raji cell lysate.