

Anti-Nectin 2 Rabbit Monoclonal Antibody
Catalog # ABO15439**Specification****Anti-Nectin 2 Rabbit Monoclonal Antibody - Product Information**

Application	WB, IF, ICC, IP, FC
Primary Accession	Q92692
Host	Rabbit
Isotype	IgG
Reactivity	Rat, Human, Mouse
Clonality	Monoclonal
Format	Liquid

Description

Anti-Nectin 2 Rabbit Monoclonal Antibody . Tested in WB, ICC/IF, IP, Flow Cytometry applications. This antibody reacts with Human, Mouse, Rat.

Anti-Nectin 2 Rabbit Monoclonal Antibody - Additional Information

Gene ID 5819

Other Names

Nectin-2, Herpes virus entry mediator B, Herpesvirus entry mediator B, HveB, Nectin cell adhesion molecule 2 {ECO:0000312|HGNC:HGNC:9707}, Poliovirus receptor-related protein 2, CD112, NECTIN2 (HGNC:9707), HVEB, PRR2, PVRL2

Calculated MW

62-75 kDa KDa

Application Details

WB 1:500-1:2000
ICC/IF 1:50-1:200
IP 1:100
FC 1:50

Contents

Rabbit IgG in phosphate buffered saline, pH 7.4, 150mM NaCl, 0.02% sodium azide and 50% glycerol, 0.4-0.5mg/ml BSA.

Immunogen

A synthesized peptide derived from human Nectin 2

Purification

Affinity-chromatography

Storage

Store at -20°C for one year. For short term storage and frequent use, store at 4°C for up to one month. Avoid repeated freeze-thaw cycles.

Anti-Nectin 2 Rabbit Monoclonal Antibody - Protein Information

Name NECTIN2 ([HGNC:9707](#))

Synonyms HVEB, PRR2, PVRL2

Function

Modulator of T-cell signaling. Can be either a costimulator of T-cell function, or a coinhibitor, depending on the receptor it binds to. Upon binding to CD226, stimulates T-cell proliferation and cytokine production, including that of IL2, IL5, IL10, IL13, and IFNG. Upon interaction with PVRIG, inhibits T-cell proliferation. These interactions are competitive (PubMed:[26755705](http://www.uniprot.org/citations/26755705)). Probable cell adhesion protein (PubMed:[9657005](http://www.uniprot.org/citations/9657005)).

Cellular Location

Cell membrane; Single-pass type I membrane protein

Tissue Location

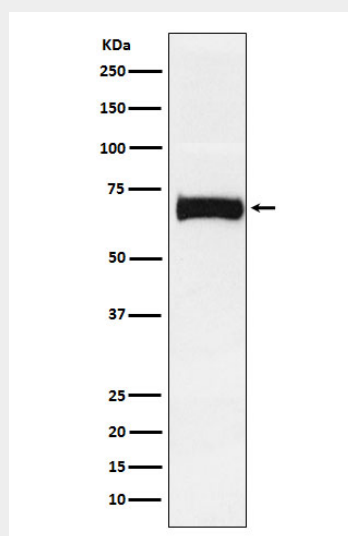
Ubiquitous.

Anti-Nectin 2 Rabbit Monoclonal Antibody - Protocols

Provided below are standard protocols that you may find useful for product applications.

- [Western Blot](#)
- [Blocking Peptides](#)
- [Dot Blot](#)
- [Immunohistochemistry](#)
- [Immunofluorescence](#)
- [Immunoprecipitation](#)
- [Flow Cytometry](#)
- [Cell Culture](#)

Anti-Nectin 2 Rabbit Monoclonal Antibody - Images



Western blot analysis of Nectin 2 expression in SW480 cell lysate.