

## Anti-MC1 Receptor Rabbit Monoclonal Antibody Catalog # ABO15431

### Specification

---

#### Anti-MC1 Receptor Rabbit Monoclonal Antibody - Product Information

Application	WB, IHC
Primary Accession	<a href="#">Q01726</a>
Host	Rabbit
Isotype	IgG
Reactivity	Human
Clonality	Monoclonal
Format	Liquid

#### Description

Anti-MC1 Receptor Rabbit Monoclonal Antibody . Tested in WB, IHC applications. This antibody reacts with Human.

#### Anti-MC1 Receptor Rabbit Monoclonal Antibody - Additional Information

**Gene ID** 4157

#### Other Names

Melanocyte-stimulating hormone receptor, MSH-R, Melanocortin receptor 1, MC1-R, MC1R, MSHR

#### Calculated MW

35 kDa KDa

#### Application Details

WB 1:500-1:2000<br>IHC 1:100-1:500

#### Contents

Rabbit IgG in phosphate buffered saline, pH 7.4, 150mM NaCl, 0.02% sodium azide and 50% glycerol, 0.4-0.5mg/ml BSA.

#### Immunogen

A synthesized peptide derived from human MC1 Receptor

#### Purification

Affinity-chromatography

#### Storage

**Store at -20°C for one year. For short term storage and frequent use, store at 4°C for up to one month. Avoid repeated freeze-thaw cycles.**

#### Anti-MC1 Receptor Rabbit Monoclonal Antibody - Protein Information

**Name** MC1R

## Synonyms MSHR

### Function

Receptor for MSH (alpha, beta and gamma) and ACTH (PubMed:<a href="http://www.uniprot.org/citations/11442765" target="\_blank">11442765</a>, PubMed:<a href="http://www.uniprot.org/citations/11707265" target="\_blank">11707265</a>, PubMed:<a href="http://www.uniprot.org/citations/1325670" target="\_blank">1325670</a>, PubMed:<a href="http://www.uniprot.org/citations/1516719" target="\_blank">1516719</a>, PubMed:<a href="http://www.uniprot.org/citations/8463333" target="\_blank">8463333</a>). The activity of this receptor is mediated by G proteins which activate adenylate cyclase (PubMed:<a href="http://www.uniprot.org/citations/11707265" target="\_blank">11707265</a>, PubMed:<a href="http://www.uniprot.org/citations/1325670" target="\_blank">1325670</a>, PubMed:<a href="http://www.uniprot.org/citations/16463023" target="\_blank">16463023</a>, PubMed:<a href="http://www.uniprot.org/citations/19737927" target="\_blank">19737927</a>). Mediates melanogenesis, the production of eumelanin (black/brown) and phaeomelanin (red/yellow), via regulation of cAMP signaling in melanocytes (PubMed:<a href="http://www.uniprot.org/citations/31097585" target="\_blank">31097585</a>).

### Cellular Location

Cell membrane; Multi-pass membrane protein

### Tissue Location

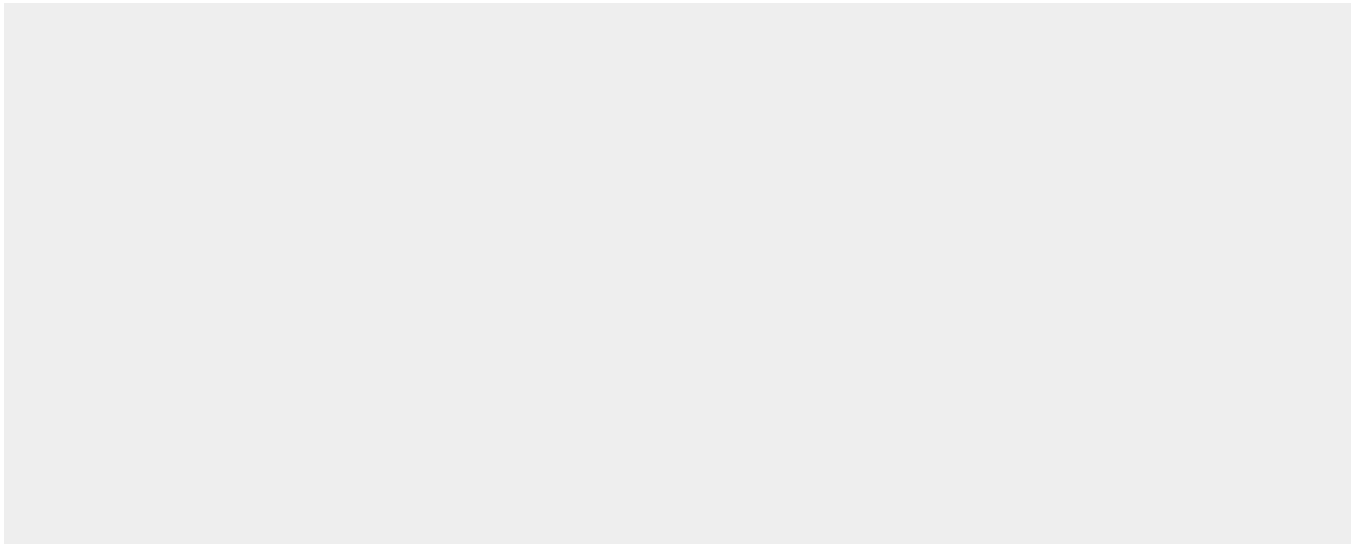
Expressed in melanocytes (PubMed:1325670, PubMed:31097585). Expressed in corticoadrenal tissue (PubMed:1325670)

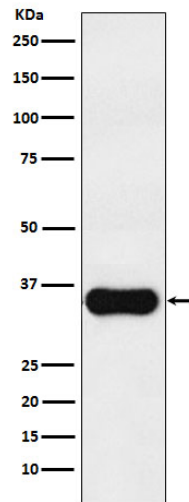
## Anti-MC1 Receptor Rabbit Monoclonal Antibody - Protocols

Provided below are standard protocols that you may find useful for product applications.

- [Western Blot](#)
- [Blocking Peptides](#)
- [Dot Blot](#)
- [Immunohistochemistry](#)
- [Immunofluorescence](#)
- [Immunoprecipitation](#)
- [Flow Cytometry](#)
- [Cell Culture](#)

## Anti-MC1 Receptor Rabbit Monoclonal Antibody - Images





Western blot analysis of MC1 Receptor expression in A375 cell lysate.