

Anti-COMT Rabbit Monoclonal Antibody
Catalog # ABO15430**Specification****Anti-COMT Rabbit Monoclonal Antibody - Product Information**

Application	WB, IHC
Primary Accession	P21964
Host	Rabbit
Isotype	IgG
Reactivity	Rat, Human, Mouse
Clonality	Monoclonal
Format	Liquid

Description

Anti-COMT Rabbit Monoclonal Antibody . Tested in WB, IHC applications. This antibody reacts with Human, Mouse, Rat.

Anti-COMT Rabbit Monoclonal Antibody - Additional Information

Gene ID 1312

Other Names

Catechol O-methyltransferase, 2.1.1.6, COMT (http://www.genenames.org/cgi-bin/gene_symbol_report?hgnc_id=2228)
HGNC:2228

Calculated MW

24 kDa, 29 kDa KDa

Application Details

WB 1:500-1:2000
IHC 1:50-1:200

Contents

Rabbit IgG in phosphate buffered saline, pH 7.4, 150mM NaCl, 0.02% sodium azide and 50% glycerol, 0.4-0.5mg/ml BSA.

Immunogen

A synthesized peptide derived from human COMT

Purification

Affinity-chromatography

Storage

Store at -20°C for one year. For short term storage and frequent use, store at 4°C for up to one month. Avoid repeated freeze-thaw cycles.

Anti-COMT Rabbit Monoclonal Antibody - Protein Information

Name COMT ([HGNC:2228](#))

Function

Catalyzes the O-methylation, and thereby the inactivation, of catecholamine neurotransmitters and catechol hormones. Also shortens the biological half-lives of certain neuroactive drugs, like L-DOPA, alpha-methyl DOPA and isoproterenol.

Cellular Location

[Isoform Soluble]: Cytoplasm

Tissue Location

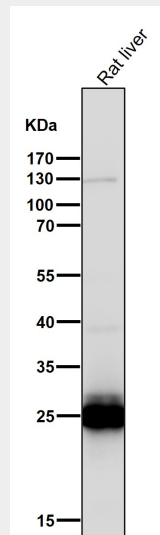
Brain, liver, placenta, lymphocytes and erythrocytes

Anti-COMT Rabbit Monoclonal Antibody - Protocols

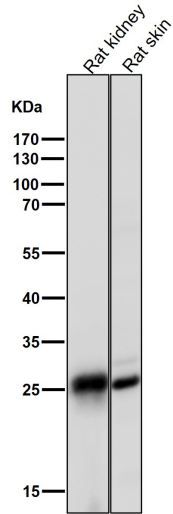
Provided below are standard protocols that you may find useful for product applications.

- [Western Blot](#)
- [Blocking Peptides](#)
- [Dot Blot](#)
- [Immunohistochemistry](#)
- [Immunofluorescence](#)
- [Immunoprecipitation](#)
- [Flow Cytometry](#)
- [Cell Culture](#)

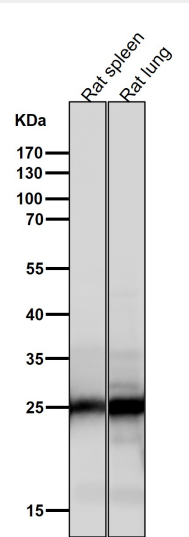
Anti-COMT Rabbit Monoclonal Antibody - Images



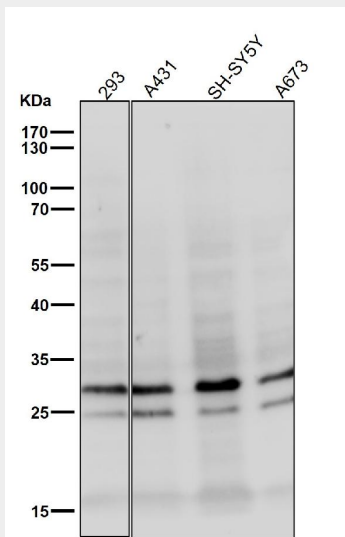
All lanes use the Antibody at 1:1K dilution for 1 hour at room temperature.



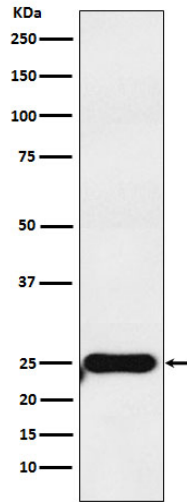
All lanes use the Antibody at 1:1K dilution for 1 hour at room temperature.



All lanes use the Antibody at 1:1K dilution for 1 hour at room temperature.



All lanes use the Antibody at 1:1K dilution for 1 hour at room temperature.



Western blot analysis of COMT expression in MOLT4 cell lysate.