

Anti-ATOH1 Rabbit Monoclonal Antibody Catalog # ABO15428

Specification

Anti-ATOH1 Rabbit Monoclonal Antibody - Product Information

Application	WB
Primary Accession	Q92858
Host	Rabbit
Isotype	IgG
Reactivity	Rat, Human, Mouse
Clonality	Monoclonal
Format	Liquid

Description

Anti-ATOH1 Rabbit Monoclonal Antibody . Tested in WB application. This antibody reacts with Human, Mouse, Rat.

Anti-ATOH1 Rabbit Monoclonal Antibody - Additional Information

Gene ID 474

Other Names

Transcription factor ATOH1, Atonal bHLH transcription factor 1 {ECO:0000312|HGNC:HGNC:797}, Class A basic helix-loop-helix protein 14 {ECO:0000312|HGNC:HGNC:797}, bHLHa14 {ECO:0000312|HGNC:HGNC:797}, Helix-loop-helix protein hATH-1 {ECO:0000312|HGNC:HGNC:797}, hATH1 {ECO:0000312|HGNC:HGNC:797}, Protein atonal homolog 1 {ECO:0000312|HGNC:HGNC:797}, ATOH1 (http://www.genenames.org/cgi-bin/gene_symbol_report?hgnc_id=797)>HGNC:797), ATH1, BHLHA14

Application Details

WB 1:500-1:1000

Contents

Rabbit IgG in phosphate buffered saline, pH 7.4, 150mM NaCl, 0.02% sodium azide and 50% glycerol, 0.4-0.5mg/ml BSA.

Immunogen

A synthesized peptide derived from human MATH1/HATH1

Purification

Affinity-chromatography

Storage

Store at -20°C for one year. For short term storage and frequent use, store at 4°C for up to one month. Avoid repeated freeze-thaw cycles.

Anti-ATOH1 Rabbit Monoclonal Antibody - Protein Information

Name ATOH1 ([HGNC:797](#))

Synonyms ATH1, BHLHA14

Function

Transcriptional regulator. Activates E box-dependent transcription in collaboration with TCF3/E47, but the activity is completely antagonized by the negative regulator of neurogenesis HES1. Plays a role in the differentiation of subsets of neural cells by activating E box-dependent transcription (By similarity).

Cellular Location

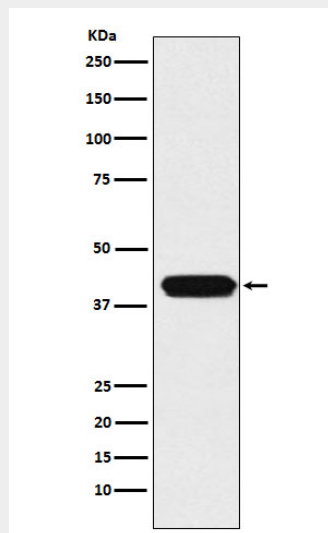
Nucleus.

Anti-ATOH1 Rabbit Monoclonal Antibody - Protocols

Provided below are standard protocols that you may find useful for product applications.

- [Western Blot](#)
- [Blocking Peptides](#)
- [Dot Blot](#)
- [Immunohistochemistry](#)
- [Immunofluorescence](#)
- [Immunoprecipitation](#)
- [Flow Cytometry](#)
- [Cell Culture](#)

Anti-ATOH1 Rabbit Monoclonal Antibody - Images



Western blot analysis of MATH1/HATH1 expression in HepG2 cell lysate.