

Anti-IL13 receptor alpha 1 Rabbit Monoclonal Antibody Catalog # ABO15419

Specification

Anti-IL13 receptor alpha 1 Rabbit Monoclonal Antibody - Product Information

Application	WB
Primary Accession	P78552
Host	Rabbit
Isotype	IgG
Reactivity	Human
Clonality	Monoclonal
Format	Liquid

Description

Anti-IL13 receptor alpha 1 Rabbit Monoclonal Antibody . Tested in WB application. This antibody reacts with Human.

Anti-IL13 receptor alpha 1 Rabbit Monoclonal Antibody - Additional Information

Gene ID 3597

Other Names

Interleukin-13 receptor subunit alpha-1, IL-13 receptor subunit alpha-1, IL-13R subunit alpha-1, IL-13R-alpha-1, IL-13RA1, Cancer/testis antigen 19, CT19, CD213a1, IL13RA1, IL13R, IL13RA

Application Details

WB 1:500-1:2000

Contents

Rabbit IgG in phosphate buffered saline, pH 7.4, 150mM NaCl, 0.02% sodium azide and 50% glycerol, 0.4-0.5mg/ml BSA.

Immunogen

A synthesized peptide derived from human IL13 receptor alpha 1

Purification

Affinity-chromatography

Storage

Store at -20°C for one year. For short term storage and frequent use, store at 4°C for up to one month. Avoid repeated freeze-thaw cycles.

Anti-IL13 receptor alpha 1 Rabbit Monoclonal Antibody - Protein Information

Name IL13RA1

Synonyms IL13R, IL13RA

Function

Binds with low affinity to interleukin-13 (IL13). Together with IL4RA can form a functional receptor for IL13. Also serves as an alternate accessory protein to the common cytokine receptor gamma chain for interleukin-4 (IL4) signaling, but cannot replace the function of IL2RG in allowing enhanced interleukin-2 (IL2) binding activity.

Cellular Location

Membrane; Single-pass type I membrane protein.

Tissue Location

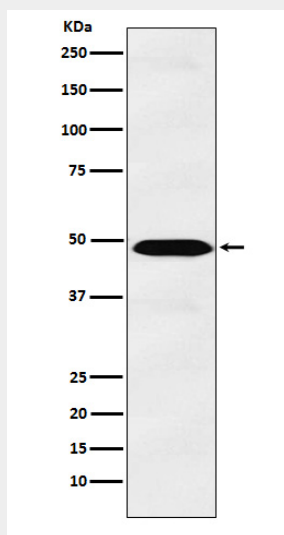
Ubiquitous. Highest levels in heart, liver, skeletal muscle and ovary; lowest levels in brain, lung and kidney Also found in B-cells, T-cells and endothelial cells

Anti-IL13 receptor alpha 1 Rabbit Monoclonal Antibody - Protocols

Provided below are standard protocols that you may find useful for product applications.

- [Western Blot](#)
- [Blocking Peptides](#)
- [Dot Blot](#)
- [Immunohistochemistry](#)
- [Immunofluorescence](#)
- [Immunoprecipitation](#)
- [Flow Cytometry](#)
- [Cell Culture](#)

Anti-IL13 receptor alpha 1 Rabbit Monoclonal Antibody - Images



Western blot analysis of IL13 receptor alpha 1 expression in A549 cell lysate.