

Anti-Galectin 8 Rabbit Monoclonal Antibody
Catalog # ABO15407**Specification****Anti-Galectin 8 Rabbit Monoclonal Antibody - Product Information**

Application	WB, IHC, IF, ICC, IP, FC
Primary Accession	O00214
Host	Rabbit
Isotype	IgG
Reactivity	Human
Clonality	Monoclonal
Format	Liquid

Description

Anti-Galectin 8 Rabbit Monoclonal Antibody . Tested in WB, IHC, ICC/IF, IP, Flow Cytometry applications. This antibody reacts with Human.

Anti-Galectin 8 Rabbit Monoclonal Antibody - Additional Information

Gene ID 3964

Other Names

Galectin-8 {ECO:0000303|Ref.2}, Gal-8, Po66 carbohydrate-binding protein, Po66-CBP, Prostate carcinoma tumor antigen 1, PCTA-1, LGALS8 ([HGNC:6569](http://www.genenames.org/cgi-bin/gene_symbol_report?hgnc_id=6569))

Application Details

WB 1:500-1:2000
IHC 1:50-1:200
ICC/IF 1:50-1:200
IP 1:50
FC 1:50

Contents

Rabbit IgG in phosphate buffered saline, pH 7.4, 150mM NaCl, 0.02% sodium azide and 50% glycerol, 0.4-0.5mg/ml BSA.

Immunogen

A synthesized peptide derived from human Galectin 8

Purification

Affinity-chromatography

Storage

Store at -20°C for one year. For short term storage and frequent use, store at 4°C for up to one month. Avoid repeated freeze-thaw cycles.

Anti-Galectin 8 Rabbit Monoclonal Antibody - Protein Information

Name LGALS8 ([HGNC:6569](#))

Function

Beta-galactoside-binding lectin that acts as a sensor of membrane damage caused by infection and restricts the proliferation of infecting pathogens by targeting them for autophagy (PubMed:22246324, PubMed:28077878). Detects membrane rupture by binding beta-galactoside ligands located on the luminal side of the endosome membrane; these ligands becoming exposed to the cytoplasm following rupture (PubMed:22246324, PubMed:28077878). Restricts infection by initiating autophagy via interaction with CALCOCO2/NDP52 (PubMed:22246324, PubMed:28077878). Required to restrict infection of bacterial invasion such as *S.typhimurium* (PubMed:22246324). Also required to restrict infection of Picornaviridae viruses (PubMed:28077878). Has a marked preference for 3'-O-sialylated and 3'-O-sulfated glycans (PubMed:21288902).

Cellular Location

Cytoplasmic vesicle. Cytoplasm, cytosol

Tissue Location

Ubiquitous. Selective expression by prostate carcinomas versus normal prostate and benign prostatic hypertrophy

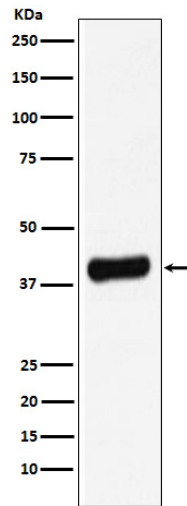
Anti-Galectin 8 Rabbit Monoclonal Antibody - Protocols

Provided below are standard protocols that you may find useful for product applications.

- [Western Blot](#)
- [Blocking Peptides](#)
- [Dot Blot](#)
- [Immunohistochemistry](#)
- [Immunofluorescence](#)
- [Immunoprecipitation](#)
- [Flow Cytometry](#)
- [Cell Culture](#)

Anti-Galectin 8 Rabbit Monoclonal Antibody - Images





Western blot analysis of Galectin 8 expression in LNCaP cell lysate.