

Anti-CD89 Rabbit Monoclonal Antibody Catalog # ABO15403

Specification

Anti-CD89 Rabbit Monoclonal Antibody - Product Information

Application	WB, IHC, IF, ICC, IP, FC
Primary Accession	P24071
Host	Rabbit
Isotype	IgG
Reactivity	Human
Clonality	Monoclonal
Format	Liquid

Description

Anti-CD89 Rabbit Monoclonal Antibody . Tested in WB, IHC, ICC/IF, IP, Flow Cytometry applications. This antibody reacts with Human.

Anti-CD89 Rabbit Monoclonal Antibody - Additional Information

Gene ID 2204

Other Names

Immunoglobulin alpha Fc receptor, IgA Fc receptor, CD89, FCAR, CD89

Application Details

WB 1:500-1:2000
IHC 1:100-1:500
ICC/IF 1:100-1:500
IP 1:50
FC 1:50

Contents

Rabbit IgG in phosphate buffered saline, pH 7.4, 150mM NaCl, 0.02% sodium azide and 50% glycerol, 0.4-0.5mg/ml BSA.

Immunogen

A synthesized peptide derived from human CD89

Purification

Affinity-chromatography

Storage

Store at -20°C for one year. For short term storage and frequent use, store at 4°C for up to one month. Avoid repeated freeze-thaw cycles.

Anti-CD89 Rabbit Monoclonal Antibody - Protein Information

Name FCAR

Synonyms CD89

Function

Binds to the Fc region of immunoglobulins alpha. Mediates several functions including cytokine production.

Cellular Location

[Isoform A.1]: Cell membrane; Single-pass type I membrane protein [Isoform A.3]: Cell membrane; Single-pass type I membrane protein [Isoform B-delta-S2]: Secreted.

Tissue Location

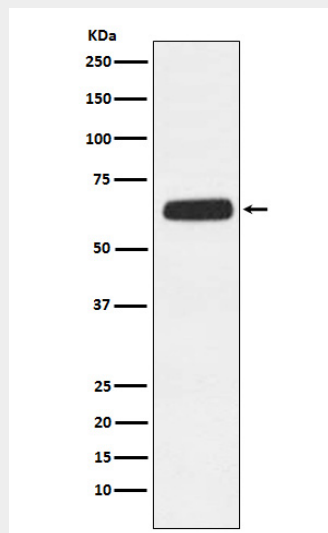
Isoform A.1, isoform A.2 and isoform A.3 are differentially expressed between blood and mucosal myeloid cells Isoform A.1, isoform A.2 and isoform A.3 are expressed in monocytes Isoform A.1 and isoform A.2 are expressed in alveolar macrophages; however only one isoform is expressed at alveolar macrophages surfaces

Anti-CD89 Rabbit Monoclonal Antibody - Protocols

Provided below are standard protocols that you may find useful for product applications.

- [Western Blot](#)
- [Blocking Peptides](#)
- [Dot Blot](#)
- [Immunohistochemistry](#)
- [Immunofluorescence](#)
- [Immunoprecipitation](#)
- [Flow Cytometry](#)
- [Cell Culture](#)

Anti-CD89 Rabbit Monoclonal Antibody - Images



Western blot analysis of CD89 expression in HL-60 cell lysate.