

Anti-Plastin L Rabbit Monoclonal Antibody
Catalog # ABO15392

Specification

Anti-Plastin L Rabbit Monoclonal Antibody - Product Information

Application	WB, IHC, IF, ICC
Primary Accession	P13796
Host	Rabbit
Isotype	IgG
Reactivity	Rat, Human, Mouse
Clonality	Monoclonal
Format	Liquid

Description

Anti-Plastin L Rabbit Monoclonal Antibody . Tested in WB, IHC, ICC/IF applications. This antibody reacts with Human, Mouse, Rat.

Anti-Plastin L Rabbit Monoclonal Antibody - Additional Information

Gene ID 3936

Other Names

Plastin-2, L-plastin, LC64P, Lymphocyte cytosolic protein 1, LCP-1, LCP1, PLS2

Calculated MW

70 kDa KDa

Application Details

WB 1:500-1:2000
IHC 1:50-1:200
ICC/IF 1:50-1:200

Contents

Rabbit IgG in phosphate buffered saline, pH 7.4, 150mM NaCl, 0.02% sodium azide and 50% glycerol, 0.4-0.5mg/ml BSA.

Immunogen

A synthesized peptide derived from human Plastin L

Purification

Affinity-chromatography

Storage

Store at -20°C for one year. For short term storage and frequent use, store at 4°C for up to one month. Avoid repeated freeze-thaw cycles.

Anti-Plastin L Rabbit Monoclonal Antibody - Protein Information

Name LCP1

Synonyms PLS2

Function

Actin-binding protein (PubMed:16636079, PubMed:17294403, PubMed:28493397). Plays a role in the activation of T-cells in response to costimulation through TCR/CD3 and CD2 or CD28 (PubMed:17294403). Modulates the cell surface expression of IL2RA/CD25 and CD69 (PubMed:17294403).

Cellular Location

Cytoplasm, cytoskeleton. Cell junction. Cell projection. Cell projection, ruffle membrane {ECO:0000250|UniProtKB:Q61233, ECO:0000269|PubMed:16636079}; Peripheral membrane protein {ECO:0000250|UniProtKB:Q61233}; Cytoplasmic side {ECO:0000250|UniProtKB:Q61233}. Note=Relocalizes to the immunological synapse between peripheral blood T-lymphocytes and antibody-presenting cells in response to costimulation through TCR/CD3 and CD2 or CD28 (PubMed:17294403). Associated with the actin cytoskeleton at membrane ruffles. Relocalizes to actin-rich cell projections upon serine phosphorylation (PubMed:16636079). {ECO:0000250|UniProtKB:Q61233, ECO:0000269|PubMed:16636079, ECO:0000269|PubMed:17294403}

Tissue Location

Detected in intestinal microvilli, hair cell stereocilia, and fibroblast filopodia, in spleen and other lymph node- containing organs. Expressed in peripheral blood T-lymphocytes, neutrophils, monocytes, B-lymphocytes, and myeloid cells

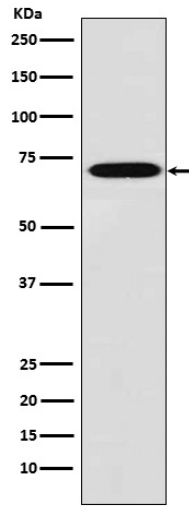
Anti-Plastin L Rabbit Monoclonal Antibody - Protocols

Provided below are standard protocols that you may find useful for product applications.

- [Western Blot](#)
- [Blocking Peptides](#)
- [Dot Blot](#)
- [Immunohistochemistry](#)
- [Immunofluorescence](#)
- [Immunoprecipitation](#)
- [Flow Cytometry](#)
- [Cell Culture](#)

Anti-Plastin L Rabbit Monoclonal Antibody - Images





Western blot analysis of Plastin L expression in THP1 cell lysate.