

## Anti-PICK1 Rabbit Monoclonal Antibody Catalog # ABO15390

### Specification

---

#### Anti-PICK1 Rabbit Monoclonal Antibody - Product Information

Application	WB, IP, FC
Primary Accession	<a href="#">Q9NRD5</a>
Host	Rabbit
Isotype	IgG
Reactivity	Rat, Human, Mouse
Clonality	Monoclonal
Format	Liquid

#### Description

Anti-PICK1 Rabbit Monoclonal Antibody . Tested in WB, IP, Flow Cytometry applications. This antibody reacts with Human, Mouse, Rat.

#### Anti-PICK1 Rabbit Monoclonal Antibody - Additional Information

Gene ID 9463

#### Other Names

PRKCA-binding protein, Protein interacting with C kinase 1, Protein kinase C-alpha-binding protein, PICK1, PRKCABP

#### Calculated MW

50 kDa KDa

#### Application Details

WB 1:500-1:2000<br>IP 1:50<br>FC 1:50

#### Contents

Rabbit IgG in phosphate buffered saline, pH 7.4, 150mM NaCl, 0.02% sodium azide and 50% glycerol, 0.4-0.5mg/ml BSA.

#### Immunogen

A synthesized peptide derived from human PICK1

#### Purification

Affinity-chromatography

Storage

**Store at -20°C for one year. For short term storage and frequent use, store at 4°C for up to one month. Avoid repeated freeze-thaw cycles.**

#### Anti-PICK1 Rabbit Monoclonal Antibody - Protein Information

Name PICK1

## Synonyms PRKCABP

### Function

Probable adapter protein that bind to and organize the subcellular localization of a variety of membrane proteins containing some PDZ recognition sequence. Involved in the clustering of various receptors, possibly by acting at the receptor internalization level. Plays a role in synaptic plasticity by regulating the trafficking and internalization of AMPA receptors. May be regulated upon PRKCA activation. May regulate ASIC1/ASIC3 channel. Regulates actin polymerization by inhibiting the actin-nucleating activity of the Arp2/3 complex; the function is competitive with nucleation promoting factors and is linked to neuronal morphology regulation and AMPA receptor (AMPA) endocytosis. Via interaction with the Arp2/3 complex involved in regulation of synaptic plasticity of excitatory synapses and required for spine shrinkage during long-term depression (LTD). Involved in regulation of astrocyte morphology, antagonistic to Arp2/3 complex activator WASL/N-WASP function.

### Cellular Location

Cytoplasm, perinuclear region. Membrane; Peripheral membrane protein. Membrane; Lipid-anchor. Postsynaptic density. Synapse, synaptosome. Cytoplasm, cytoskeleton. Note=Also membrane-associated, present at excitatory synapses.

### Tissue Location

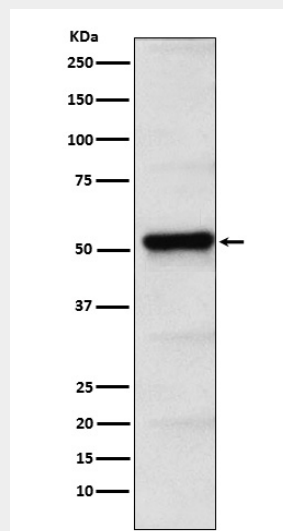
Ubiquitous.

## Anti-PICK1 Rabbit Monoclonal Antibody - Protocols

Provided below are standard protocols that you may find useful for product applications.

- [Western Blot](#)
- [Blocking Peptides](#)
- [Dot Blot](#)
- [Immunohistochemistry](#)
- [Immunofluorescence](#)
- [Immunoprecipitation](#)
- [Flow Cytometry](#)
- [Cell Culture](#)

## Anti-PICK1 Rabbit Monoclonal Antibody - Images



Western blot analysis of PICK1 expression in HeLa cell lysate.