

Anti-BAP31 Rabbit Monoclonal Antibody
Catalog # ABO15382**Specification****Anti-BAP31 Rabbit Monoclonal Antibody - Product Information**

Application	WB, IHC, IF, ICC, FC
Primary Accession	P51572
Host	Rabbit
Isotype	IgG
Reactivity	Human, Mouse
Clonality	Monoclonal
Format	Liquid

Description

Anti-BAP31 Rabbit Monoclonal Antibody . Tested in WB, IHC, ICC/IF, Flow Cytometry applications. This antibody reacts with Human, Mouse.

Anti-BAP31 Rabbit Monoclonal Antibody - Additional Information

Gene ID 10134

Other Names

B-cell receptor-associated protein 31, BCR-associated protein 31, Bap31, 6C6-AG tumor-associated antigen, Protein CDM, p28, BCAP31 ([HGNC:16695](http://www.genenames.org/cgi-bin/gene_symbol_report?hgnc_id=16695))

Calculated MW

25 kDa KDa

Application Details

WB 1:500-1:2000
IHC 1:50-1:200
ICC/IF 1:50-1:200
FC 1:100

Contents

Rabbit IgG in phosphate buffered saline, pH 7.4, 150mM NaCl, 0.02% sodium azide and 50% glycerol, 0.4-0.5mg/ml BSA.

Immunogen

A synthesized peptide derived from human BAP31

Purification

Affinity-chromatography

Storage

Store at -20°C for one year. For short term storage and frequent use, store at 4°C for up to one month. Avoid repeated freeze-thaw cycles.

Anti-BAP31 Rabbit Monoclonal Antibody - Protein Information

Name BCAP31 ([HGNC:16695](#))

Function

Functions as a chaperone protein (PubMed:[18287538](http://www.uniprot.org/citations/18287538)), PubMed:[9396746](http://www.uniprot.org/citations/9396746)). Is one of the most abundant endoplasmic reticulum (ER) proteins (PubMed:[18287538](http://www.uniprot.org/citations/18287538), PubMed:[9396746](http://www.uniprot.org/citations/9396746)). Plays a role in the export of secreted proteins in the ER, the recognition of abnormally folded protein and their targeting to the ER associated-degradation (ERAD) (PubMed:[18287538](http://www.uniprot.org/citations/18287538), PubMed:[9396746](http://www.uniprot.org/citations/9396746)). Also serves as a cargo receptor for the export of transmembrane proteins (By similarity). Plays a role in the assembly of the mitochondrial membrane respiratory chain NADH dehydrogenase (Complex I) by stimulating the translocation of NDUFS4 and NDUFB11 from the cytosol to the mitochondria via interaction with TOMM40 (PubMed:[31206022](http://www.uniprot.org/citations/31206022)). In response to ER stress, delocalizes from the ER-mitochondria contact sites and binds BCL2 (PubMed:[31206022](http://www.uniprot.org/citations/31206022)). May be involved in CASP8-mediated apoptosis (PubMed:[10958671](http://www.uniprot.org/citations/10958671)).

Cellular Location

Endoplasmic reticulum membrane; Multi-pass membrane protein Endoplasmic reticulum-Golgi intermediate compartment membrane; Multi-pass membrane protein. Note=May shuttle between the ER and the intermediate compartment/cis-Golgi complex (PubMed:9396746). Associates with the mitochondria-associated endoplasmic reticulum membrane via interaction with TOMM40 (PubMed:31206022)

Tissue Location

Ubiquitous. Highly expressed in neurons and discrete endocrine cells.

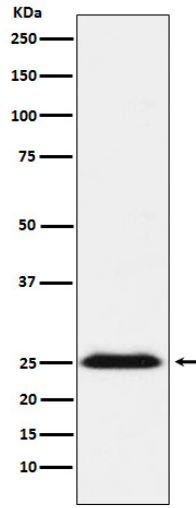
Anti-BAP31 Rabbit Monoclonal Antibody - Protocols

Provided below are standard protocols that you may find useful for product applications.

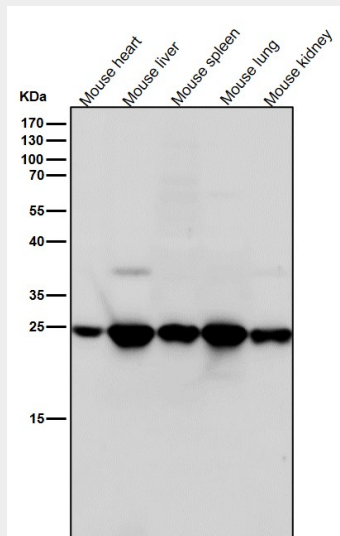
- [Western Blot](#)
- [Blocking Peptides](#)
- [Dot Blot](#)
- [Immunohistochemistry](#)
- [Immunofluorescence](#)
- [Immunoprecipitation](#)
- [Flow Cytometry](#)
- [Cell Culture](#)

Anti-BAP31 Rabbit Monoclonal Antibody - Images

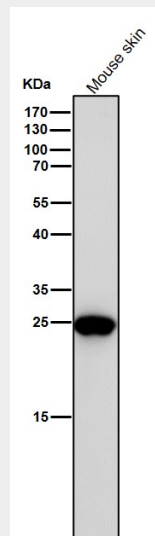




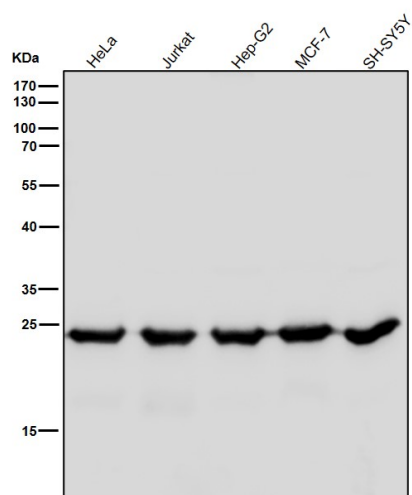
Western blot analysis of BAP31 expression in NCCIT cell lysate.



All lanes use the Antibody at 1:4K dilution for 1 hour at room temperature.



All lanes use the Antibody at 1:4K dilution for 1 hour at room temperature.



All lanes use the Antibody at 1:4K dilution for 1 hour at room temperature.