

**Anti-Prolactin Rabbit Monoclonal Antibody**  
Catalog # ABO15370

**Specification**

---

**Anti-Prolactin Rabbit Monoclonal Antibody - Product Information**

Application	WB
Primary Accession	<a href="#">P01236</a>
Host	Rabbit
Isotype	IgG
Reactivity	Human
Clonality	Monoclonal
Format	Liquid

**Description**

Anti-Prolactin Rabbit Monoclonal Antibody . Tested in WB application. This antibody reacts with Human.

**Anti-Prolactin Rabbit Monoclonal Antibody - Additional Information**

**Gene ID** 5617

**Other Names**

Prolactin, PRL, PRL

**Application Details**

WB 1:500-1:2000

**Contents**

Rabbit IgG in phosphate buffered saline, pH 7.4, 150mM NaCl, 0.02% sodium azide and 50% glycerol, 0.4-0.5mg/ml BSA.

**Immunogen**

A synthesized peptide derived from human Prolactin

**Purification**

Affinity-chromatography

**Storage**

**Store at -20°C for one year. For short term storage and frequent use, store at 4°C for up to one month. Avoid repeated freeze-thaw cycles.**

**Anti-Prolactin Rabbit Monoclonal Antibody - Protein Information**

**Name** PRL

**Function**

Prolactin acts primarily on the mammary gland by promoting lactation.

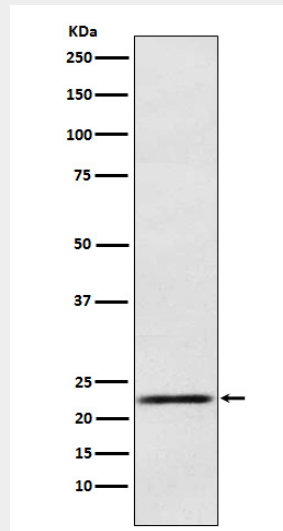
**Cellular Location**  
Secreted.

### **Anti-Prolactin Rabbit Monoclonal Antibody - Protocols**

Provided below are standard protocols that you may find useful for product applications.

- [Western Blot](#)
- [Blocking Peptides](#)
- [Dot Blot](#)
- [Immunohistochemistry](#)
- [Immunofluorescence](#)
- [Immunoprecipitation](#)
- [Flow Cytometry](#)
- [Cell Culture](#)

### **Anti-Prolactin Rabbit Monoclonal Antibody - Images**



Western blot analysis of Prolactin expression in Human fetal pituitary lysate.