

**Anti-Fibrinogen gamma chain Rabbit Monoclonal Antibody**  
Catalog # ABO15366

**Specification**

---

**Anti-Fibrinogen gamma chain Rabbit Monoclonal Antibody - Product Information**

Application	WB, FC
Primary Accession	<a href="#">P02679</a>
Host	Rabbit
Isotype	IgG
Reactivity	Human
Clonality	Monoclonal
Format	Liquid

**Description**

Anti-Fibrinogen gamma chain Rabbit Monoclonal Antibody . Tested in WB, Flow Cytometry applications. This antibody reacts with Human.

**Anti-Fibrinogen gamma chain Rabbit Monoclonal Antibody - Additional Information**

**Gene ID** 2266

**Other Names**

Fibrinogen gamma chain, FGG

**Calculated MW**

52 kDa KDa

**Application Details**

WB 1:500-1:2000<br>FC 1:50

**Contents**

Rabbit IgG in phosphate buffered saline, pH 7.4, 150mM NaCl, 0.02% sodium azide and 50% glycerol, 0.4-0.5mg/ml BSA.

**Immunogen**

A synthesized peptide derived from human Fibrinogen gamma chain

**Purification**

Affinity-chromatography

Storage

**Store at -20°C for one year. For short term storage and frequent use, store at 4°C for up to one month. Avoid repeated freeze-thaw cycles.**

**Anti-Fibrinogen gamma chain Rabbit Monoclonal Antibody - Protein Information**

**Name** FGG

**Function**

Together with fibrinogen alpha (FGA) and fibrinogen beta (FGB), polymerizes to form an insoluble fibrin matrix. Has a major function in hemostasis as one of the primary components of blood clots. In addition, functions during the early stages of wound repair to stabilize the lesion and guide cell migration during re-epithelialization. Was originally thought to be essential for platelet aggregation, based on in vitro studies using anticoagulated blood. However, subsequent studies have shown that it is not absolutely required for thrombus formation in vivo. Enhances expression of SELP in activated platelets via an ITGB3-dependent pathway. Maternal fibrinogen is essential for successful pregnancy. Fibrin deposition is also associated with infection, where it protects against IFNG-mediated hemorrhage. May also facilitate the antibacterial immune response via both innate and T-cell mediated pathways.

**Cellular Location**

Secreted

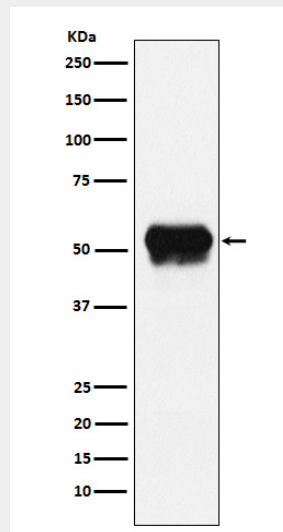
**Tissue Location**

Detected in blood plasma (at protein level).

**Anti-Fibrinogen gamma chain Rabbit Monoclonal Antibody - Protocols**

Provided below are standard protocols that you may find useful for product applications.

- [Western Blot](#)
- [Blocking Peptides](#)
- [Dot Blot](#)
- [Immunohistochemistry](#)
- [Immunofluorescence](#)
- [Immunoprecipitation](#)
- [Flow Cytometry](#)
- [Cell Culture](#)

**Anti-Fibrinogen gamma chain Rabbit Monoclonal Antibody - Images**

Western blot analysis of Fibrinogen gamma chain expression in Human plasma lysate.