

Anti-APOL1 Rabbit Monoclonal Antibody
Catalog # ABO15363

Specification

Anti-APOL1 Rabbit Monoclonal Antibody - Product Information

Application	WB, IF, ICC, IP, FC
Primary Accession	O14791
Host	Rabbit
Isotype	IgG
Reactivity	Human
Clonality	Monoclonal
Format	Liquid

Description

Anti-APOL1 Rabbit Monoclonal Antibody . Tested in WB, ICC/IF, IP, Flow Cytometry applications. This antibody reacts with Human.

Anti-APOL1 Rabbit Monoclonal Antibody - Additional Information

Gene ID 8542

Other Names

Apolipoprotein L1, Apolipoprotein L, Apo-L, ApoL, Apolipoprotein L-I, ApoL-I, APOL1, APOL

Calculated MW

44 kDa KDa

Application Details

WB 1:500-1:2000
ICC/IF 1:50-1:200
IP 1:50
FC 1:50

Contents

Rabbit IgG in phosphate buffered saline, pH 7.4, 150mM NaCl, 0.02% sodium azide and 50% glycerol, 0.4-0.5mg/ml BSA.

Immunogen

A synthesized peptide derived from human APOL1

Purification

Affinity-chromatography

Storage

Store at -20°C for one year. For short term storage and frequent use, store at 4°C for up to one month. Avoid repeated freeze-thaw cycles.

Anti-APOL1 Rabbit Monoclonal Antibody - Protein Information

Name APOL1

Synonyms APOL

Function

May play a role in lipid exchange and transport throughout the body. May participate in reverse cholesterol transport from peripheral cells to the liver.

Cellular Location

Secreted.

Tissue Location

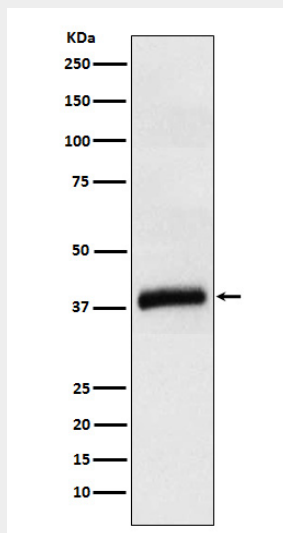
Plasma. Found on APOA-I-containing high density lipoprotein (HDL3). Expressed in pancreas, lung, prostate, liver, placenta and spleen

Anti-APOL1 Rabbit Monoclonal Antibody - Protocols

Provided below are standard protocols that you may find useful for product applications.

- [Western Blot](#)
- [Blocking Peptides](#)
- [Dot Blot](#)
- [Immunohistochemistry](#)
- [Immunofluorescence](#)
- [Immunoprecipitation](#)
- [Flow Cytometry](#)
- [Cell Culture](#)

Anti-APOL1 Rabbit Monoclonal Antibody - Images



Western blot analysis of APOL1 expression in Human plasma cell lysate.