

Anti-Rab25 Rabbit Monoclonal Antibody
Catalog # ABO15353**Specification****Anti-Rab25 Rabbit Monoclonal Antibody - Product Information**

Application	WB
Primary Accession	P57735
Host	Rabbit
Isotype	IgG
Reactivity	Human
Clonality	Monoclonal
Format	Liquid

Description

Anti-Rab25 Rabbit Monoclonal Antibody . Tested in WB application. This antibody reacts with Human.

Anti-Rab25 Rabbit Monoclonal Antibody - Additional Information

Gene ID 57111

Other Names

Ras-related protein Rab-25, CATX-8, RAB25 (http://www.genenames.org/cgi-bin/gene_symbol_report?hgnc_id=18238), CATX8

Application Details

WB 1:500-1:1000

Contents

Rabbit IgG in phosphate buffered saline, pH 7.4, 150mM NaCl, 0.02% sodium azide and 50% glycerol, 0.4-0.5mg/ml BSA.

Immunogen

A synthesized peptide derived from human Rab25

Purification

Affinity-chromatography

Storage

Store at -20°C for one year. For short term storage and frequent use, store at 4°C for up to one month. Avoid repeated freeze-thaw cycles.

Anti-Rab25 Rabbit Monoclonal Antibody - Protein Information

Name RAB25 ([HGNC:18238](#))

Synonyms CATX8

Function

Involved in the regulation of cell survival. Promotes invasive migration of cells in which it functions to localize and maintain integrin alpha-V/beta-1 at the tips of extending pseudopodia (PubMed:17925226). Involved in the regulation of epithelial morphogenesis through the control of CLDN4 expression and localization at tight junctions (By similarity). May selectively regulate the apical recycling pathway. Together with MYO5B regulates transcytosis (By similarity).

Cellular Location

Cell membrane; Lipid-anchor; Cytoplasmic side. Cell projection, pseudopodium membrane. Cytoplasmic vesicle. Note=Colocalizes with integrin alpha-V/beta-1 in vesicles at the pseudopodial tips

Tissue Location

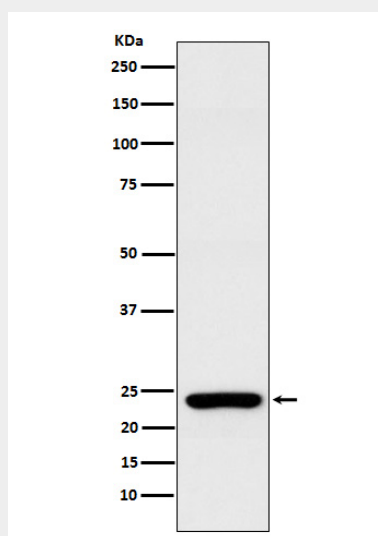
Expressed in ovarian epithelium (NOE) and breast tissue. Expressed in ovarian cancer; expression is increased relative to NOE cells. Expression in ovarian cancer is stage dependent, with stage III and stage IV showing higher levels than early stage cancers Expressed in breast cancer; expression is increased relative to normal breast tissue.

Anti-Rab25 Rabbit Monoclonal Antibody - Protocols

Provided below are standard protocols that you may find useful for product applications.

- [Western Blot](#)
- [Blocking Peptides](#)
- [Dot Blot](#)
- [Immunohistochemistry](#)
- [Immunofluorescence](#)
- [Immunoprecipitation](#)
- [Flow Cytometry](#)
- [Cell Culture](#)

Anti-Rab25 Rabbit Monoclonal Antibody - Images



Western blot analysis of Rab25 expression in MCF7 cell lysate.