

Anti-Cellubrevin Rabbit Monoclonal Antibody Catalog # ABO15346

Specification

Anti-Cellubrevin Rabbit Monoclonal Antibody - Product Information

Application	WB, IF, ICC, IP, FC
Primary Accession	Q15836
Host	Rabbit
Isotype	IgG
Reactivity	Human
Clonality	Monoclonal
Format	Liquid

Description

Anti-Cellubrevin Rabbit Monoclonal Antibody . Tested in WB, ICC/IF, IP, Flow Cytometry applications. This antibody reacts with Human.

Anti-Cellubrevin Rabbit Monoclonal Antibody - Additional Information

Gene ID 9341

Other Names

Vesicle-associated membrane protein 3, VAMP-3, Cellubrevin, CEB, Synaptobrevin-3, VAMP3, SYB3

Calculated MW

11 kDa KDa

Application Details

WB 1:500-1:2000
ICC/IF 1:50-1:200
IP 1:40
FC 1:50

Contents

Rabbit IgG in phosphate buffered saline, pH 7.4, 150mM NaCl, 0.02% sodium azide and 50% glycerol, 0.4-0.5mg/ml BSA.

Immunogen

A synthesized peptide derived from human Cellubrevin

Purification

Affinity-chromatography

Storage

Store at -20°C for one year. For short term storage and frequent use, store at 4°C for up to one month. Avoid repeated freeze-thaw cycles.

Anti-Cellubrevin Rabbit Monoclonal Antibody - Protein Information

Name VAMP3

Synonyms SYB3

Function

SNARE involved in vesicular transport from the late endosomes to the trans-Golgi network.

Cellular Location

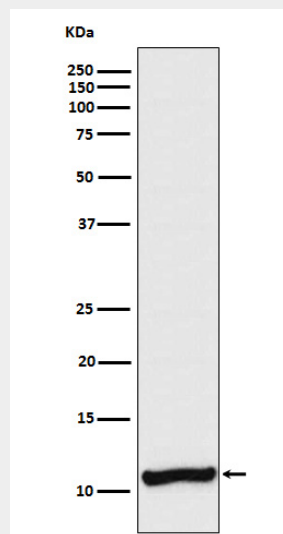
Early endosome membrane; Single-pass type IV membrane protein. Recycling endosome membrane; Single-pass type I membrane protein. Synapse, synaptosome

Anti-Cellubrevin Rabbit Monoclonal Antibody - Protocols

Provided below are standard protocols that you may find useful for product applications.

- [Western Blot](#)
- [Blocking Peptides](#)
- [Dot Blot](#)
- [Immunohistochemistry](#)
- [Immunofluorescence](#)
- [Immunoprecipitation](#)
- [Flow Cytometry](#)
- [Cell Culture](#)

Anti-Cellubrevin Rabbit Monoclonal Antibody - Images



Western blot analysis of Cellubrevin expression in A375 cell lysate.