

## Anti-TBLR1 Rabbit Monoclonal Antibody Catalog # ABO15340

### Specification

---

#### Anti-TBLR1 Rabbit Monoclonal Antibody - Product Information

Application	WB, IHC, IF, ICC
Primary Accession	<a href="#">Q9BZK7</a>
Host	Rabbit
Isotype	IgG
Reactivity	Rat, Human, Mouse
Clonality	Monoclonal
Format	Liquid

#### Description

Anti-TBLR1 Rabbit Monoclonal Antibody . Tested in WB, IHC, ICC/IF applications. This antibody reacts with Human, Mouse, Rat.

#### Anti-TBLR1 Rabbit Monoclonal Antibody - Additional Information

Gene ID 79718

#### Other Names

F-box-like/WD repeat-containing protein TBL1XR1, Nuclear receptor corepressor/HDAC3 complex subunit TBLR1, TBL1-related protein 1, Transducin beta-like 1X-related protein 1, TBL1XR1, IRA1, TBLR1

#### Calculated MW

56 kDa KDa

#### Application Details

WB 1:500-1:2000<br>IHC 1:50-1:200<br>ICC/IF 1:50-1:200

#### Contents

Rabbit IgG in phosphate buffered saline, pH 7.4, 150mM NaCl, 0.02% sodium azide and 50% glycerol, 0.4-0.5mg/ml BSA.

#### Immunogen

A synthesized peptide derived from human TBLR1

#### Purification

Affinity-chromatography

#### Storage

Store at -20°C for one year. For short term storage and frequent use, store at 4°C for up to one month. Avoid repeated freeze-thaw cycles.

#### Anti-TBLR1 Rabbit Monoclonal Antibody - Protein Information

**Name** TBL1XR1

**Synonyms** IRA1, TBLR1

**Function**

F-box-like protein involved in the recruitment of the ubiquitin/19S proteasome complex to nuclear receptor-regulated transcription units. Plays an essential role in transcription activation mediated by nuclear receptors. Probably acts as integral component of the N-CoR corepressor complex that mediates the recruitment of the 19S proteasome complex, leading to the subsequent proteasomal degradation of N-CoR complex, thereby allowing cofactor exchange, and transcription activation.

**Cellular Location**

Nucleus.

**Tissue Location**

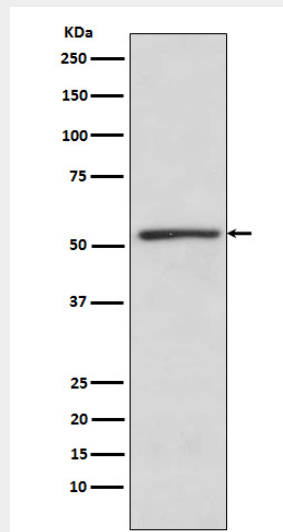
Widely expressed including the pituitary, hypothalamus, white and brown adipose tissue, muscle and liver

**Anti-TBLR1 Rabbit Monoclonal Antibody - Protocols**

Provided below are standard protocols that you may find useful for product applications.

- [Western Blot](#)
- [Blocking Peptides](#)
- [Dot Blot](#)
- [Immunohistochemistry](#)
- [Immunofluorescence](#)
- [Immunoprecipitation](#)
- [Flow Cytometry](#)
- [Cell Culture](#)

**Anti-TBLR1 Rabbit Monoclonal Antibody - Images**



Western blot analysis of TBLR1 expression in K562 cell lysate.