

## Anti-SULT2A1 Rabbit Monoclonal Antibody Catalog # ABO15339

### Specification

---

#### Anti-SULT2A1 Rabbit Monoclonal Antibody - Product Information

Application	WB, IHC, IF, ICC, FC
Primary Accession	<a href="#">Q06520</a>
Host	Rabbit
Isotype	IgG
Reactivity	Rat, Human, Mouse
Clonality	Monoclonal
Format	Liquid

#### Description

Anti-SULT2A1 Rabbit Monoclonal Antibody . Tested in WB, IHC, ICC/IF, Flow Cytometry applications. This antibody reacts with Human, Mouse, Rat.

#### Anti-SULT2A1 Rabbit Monoclonal Antibody - Additional Information

**Gene ID** 6822

#### Other Names

Sulfotransferase 2A1, ST2A1, 2.8.2.2, Bile salt sulfotransferase, 2.8.2.14, Dehydroepiandrosterone sulfotransferase, DHEA-ST, DHEA-ST8, Hydroxysteroid Sulfotransferase, HST, ST2, SULT2A3, SULT2A1, HST, STD

#### Calculated MW

34 kDa KDa

#### Application Details

WB 1:500-1:2000<br>IHC 1:100-1:500<br>ICC/IF 1:50-1:200<br>FC 1:80

#### Contents

Rabbit IgG in phosphate buffered saline, pH 7.4, 150mM NaCl, 0.02% sodium azide and 50% glycerol, 0.4-0.5mg/ml BSA.

#### Immunogen

A synthesized peptide derived from human SULT2A1

#### Purification

Affinity-chromatography

#### Storage

**Store at -20°C for one year. For short term storage and frequent use, store at 4°C for up to one month. Avoid repeated freeze-thaw cycles.**

#### Anti-SULT2A1 Rabbit Monoclonal Antibody - Protein Information

**Name** SULT2A1

**Synonyms** HST, STD

### Function

Sulfotransferase that utilizes 3'-phospho-5'-adenylyl sulfate (PAPS) as sulfonate donor to catalyze the sulfonation of steroids and bile acids in the liver and adrenal glands. Mediates the sulfation of a wide range of steroids and sterols, including pregnenolone, androsterone, DHEA, bile acids, cholesterol and as well many xenobiotics that contain alcohol and phenol functional groups (PubMed:<a href="http://www.uniprot.org/citations/14573603" target="\_blank">14573603</a>, PubMed:<a href="http://www.uniprot.org/citations/18042734" target="\_blank">18042734</a>, PubMed:<a href="http://www.uniprot.org/citations/19589875" target="\_blank">19589875</a>, PubMed:<a href="http://www.uniprot.org/citations/21187059" target="\_blank">21187059</a>, PubMed:<a href="http://www.uniprot.org/citations/2268288" target="\_blank">2268288</a>, PubMed:<a href="http://www.uniprot.org/citations/29671343" target="\_blank">29671343</a>, PubMed:<a href="http://www.uniprot.org/citations/7678732" target="\_blank">7678732</a>, PubMed:<a href="http://www.uniprot.org/citations/7854148" target="\_blank">7854148</a>). Sulfonation increases the water solubility of most compounds, and therefore their renal excretion, but it can also result in bioactivation to form active metabolites. Plays an important role in maintaining steroid and lipid homeostasis (PubMed:<a href="http://www.uniprot.org/citations/14573603" target="\_blank">14573603</a>, PubMed:<a href="http://www.uniprot.org/citations/19589875" target="\_blank">19589875</a>, PubMed:<a href="http://www.uniprot.org/citations/21187059" target="\_blank">21187059</a>). Plays a key role in bile acid metabolism (PubMed:<a href="http://www.uniprot.org/citations/2268288" target="\_blank">2268288</a>). In addition, catalyzes the metabolic activation of potent carcinogenic polycyclic arylmethanols (By similarity).

### Cellular Location

Cytoplasm.

### Tissue Location

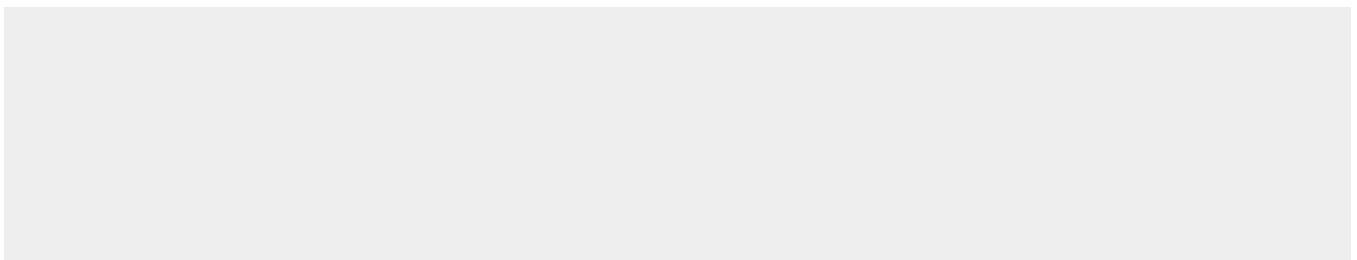
Liver, adrenal and at lower level in the kidney. Is present in human fetus in higher level in the adrenal than the liver and the kidney

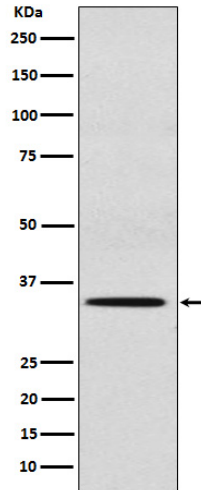
## Anti-SULT2A1 Rabbit Monoclonal Antibody - Protocols

Provided below are standard protocols that you may find useful for product applications.

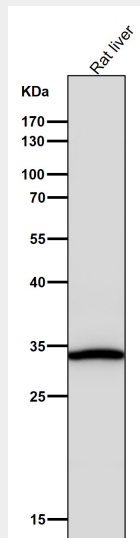
- [Western Blot](#)
- [Blocking Peptides](#)
- [Dot Blot](#)
- [Immunohistochemistry](#)
- [Immunofluorescence](#)
- [Immunoprecipitation](#)
- [Flow Cytometry](#)
- [Cell Culture](#)

## Anti-SULT2A1 Rabbit Monoclonal Antibody - Images

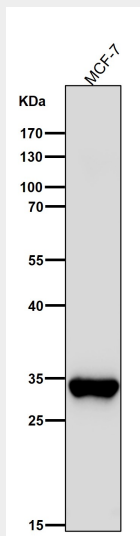




Western blot analysis of SUL2A1 expression in HepG2 cell lysate.



All lanes use the Antibody at 1:5K dilution for 1 hour at room temperature.



All lanes use the Antibody at 1:5K dilution for 1 hour at room temperature.