

**Anti-Retinoic Acid Receptor gamma Rabbit Monoclonal Antibody**  
Catalog # ABO15336

**Specification**

---

**Anti-Retinoic Acid Receptor gamma Rabbit Monoclonal Antibody - Product Information**

Application	WB, IF, ICC
Primary Accession	<a href="#">P13631</a>
Host	Rabbit
Isotype	IgG
Reactivity	Rat, Human
Clonality	Monoclonal
Format	Liquid

**Description**

Anti-Retinoic Acid Receptor gamma Rabbit Monoclonal Antibody . Tested in WB, ICC/IF applications. This antibody reacts with Human, Rat.

**Anti-Retinoic Acid Receptor gamma Rabbit Monoclonal Antibody - Additional Information**

**Gene ID** 5916

**Other Names**

Retinoic acid receptor gamma, RAR-gamma, Nuclear receptor subfamily 1 group B member 3, RARG, NR1B3

**Calculated MW**

50 kDa KDa

**Application Details**

WB 1:500-1:2000<br>ICC/IF 1:50-1:200

**Contents**

Rabbit IgG in phosphate buffered saline, pH 7.4, 150mM NaCl, 0.02% sodium azide and 50% glycerol, 0.4-0.5mg/ml BSA.

**Immunogen**

A synthesized peptide derived from human Retinoic Acid Receptor gamma

**Purification**

Affinity-chromatography

Storage

**Store at -20°C for one year. For short term storage and frequent use, store at 4°C for up to one month. Avoid repeated freeze-thaw cycles.**

**Anti-Retinoic Acid Receptor gamma Rabbit Monoclonal Antibody - Protein Information**

**Name** RARG

## Synonyms NR1B3

### Function

Receptor for retinoic acid. Retinoic acid receptors bind as heterodimers to their target response elements in response to their ligands, all-trans or 9-cis retinoic acid, and regulate gene expression in various biological processes. The RAR/RXR heterodimers bind to the retinoic acid response elements (RARE) composed of tandem 5'-AGGTCA-3' sites known as DR1-DR5. In the absence of ligand, acts mainly as an activator of gene expression due to weak binding to corepressors. Required for limb bud development. In concert with RARA or RARB, required for skeletal growth, matrix homeostasis and growth plate function (By similarity).

### Cellular Location

Nucleus. Cytoplasm

### Tissue Location

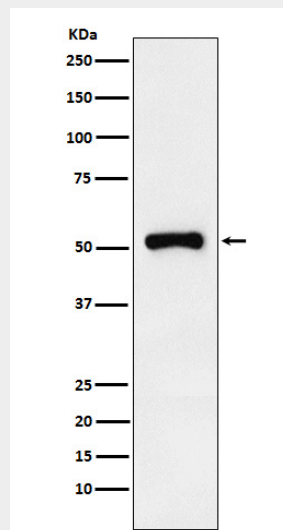
Expressed in aortic endothelial cells (at protein level).

## Anti-Retinoic Acid Receptor gamma Rabbit Monoclonal Antibody - Protocols

Provided below are standard protocols that you may find useful for product applications.

- [Western Blot](#)
- [Blocking Peptides](#)
- [Dot Blot](#)
- [Immunohistochemistry](#)
- [Immunofluorescence](#)
- [Immunoprecipitation](#)
- [Flow Cytometry](#)
- [Cell Culture](#)

## Anti-Retinoic Acid Receptor gamma Rabbit Monoclonal Antibody - Images



Western blot analysis of Retinoic Acid Receptor gamma expression in HeLa cell lysate.